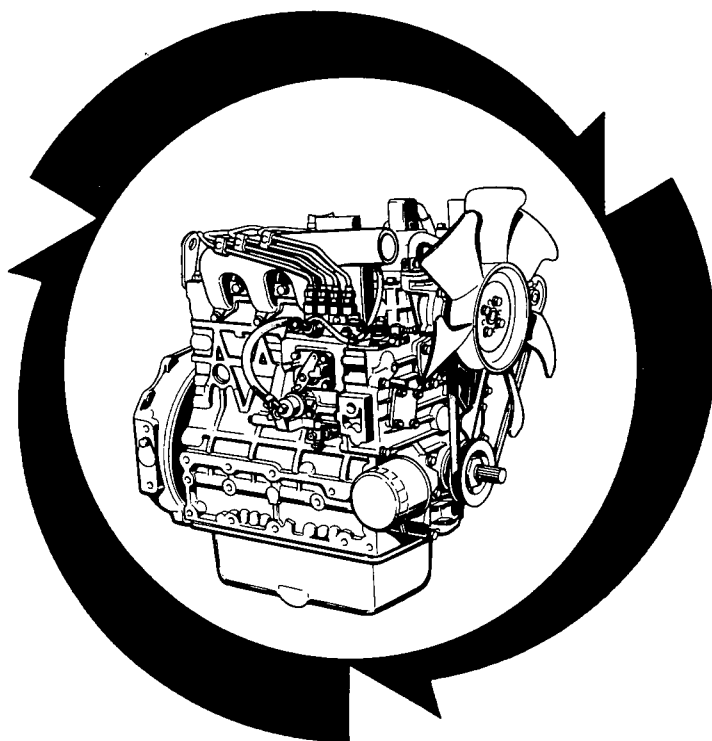


# ILLUSTRATED PARTS LIST

# KUBOTA

MODEL V1903-EBG-EPS-1  
V1903-BG-EPS-1

# DIESEL ENGINE



**Kubota**

97898-55060  
SEPT. 2000

## NOTICE

This Parts List is for the following purposes.

1. When ordering parts, check with this Parts List to confirm the part number and the name of parts.
2. When making repairs, refer to the illustrations in this Parts List.
3. This Parts List is subject to change without notice.

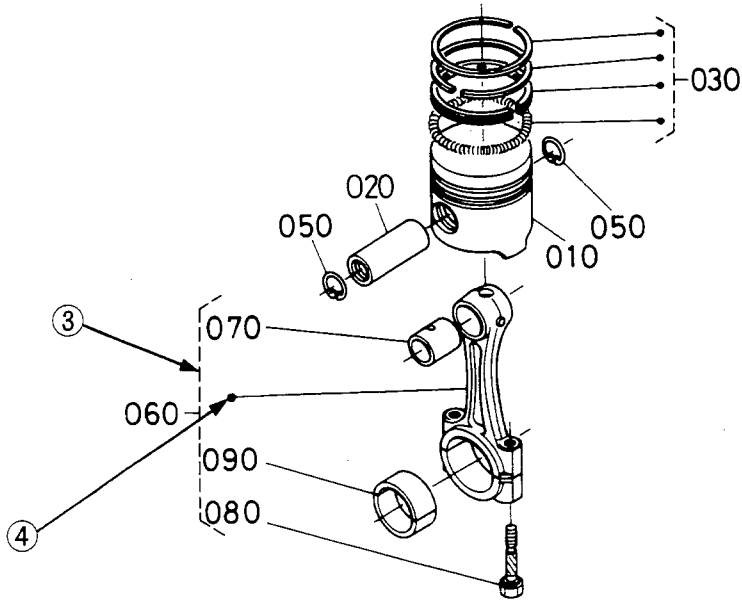
ENGINE	
MODEL	CODE No.
V1903-EBG-EPS-1	1G627-21000
V1903-BG-EPS-1	19061-23000

# INSTRUCTIONS

①  
↓  
**0102** PISTON AND CRANKSHAFT


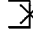
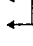
⑪                      ②  
↓                              ↓  
[ B ]                      **B02-R**

⑩ → S.No. ; A: ≤15000, B: 14000 to 15000



REF. No	PART No.	PART NAME	Q'TY/S.No.		I.C.	REMARKS
			A	B		
010	15800-0000-0	PISTON	1 ~15000	1 ~15000	↕	[Example-1]
010	15800-0000-2	PISTON	1 15001~	1 15001~	↕	
020	15800-1000-0	PIN,PISTON	1 ~15000	1 ~15000	↕	[Example-2]
020	15800-1000-2	PIN,PISTON	1 15001~	1 15001~	↕	
030	15800-2000-0	ASSY PISTON RING	1 ~15000	1 ~15000	↕	
030	15830-2000-0	ASSY PISTON RING	1 15001~	1 15001~	↕	[Example-3]

A:XXXXX, B:XXXXX

- ① Fig. No. .... Represents No. corresponding to each group name.
- ② L. No. .... Substitute for conventional page numbering. Left-hand pages of the parts list are  
(location No.) numbered in **XXX-L**, and the right-hand pages in **XXX-R**.  
The location No. are also used in numerical index at the end of parts list.
- ③ Components ..... The components of an assembly are identified by a bracket of dotted lines.
- ④ Point ..... Indicates that the parts is not sold independently.  
The assembly (Ref.No.060) containing the part needs to be ordered.
- ⑤ REF. No. .... Reference numbers are assigned to parts in the illustration. The code number of a part in the illustration can be identified by referring to the same reference number in the parts list.
- ⑥ Model name ..... The name of the basic model is indicated in this column. Other applicable models are indicated on the "REMARKS" column ⑨.
- ⑦ S. No. .... Indicates a group of serial numbers to which a design change is applied.  
(serial No.)
- ⑧ I. C. .... Indicates the interchangeability of parts due to design change.  
(interchangeability)
- Example-1 .....  indicates that a new part can replace an old part, but not vice versa.  
15800-0000-0 is applicable to the first serial number to S. No. 15000.  
15800-0000-2 is applicable to the first serial number and above.
- Example-2 .....  indicates that the new and old parts are not interchangeable.  
15800-1000-0 is applicable to the first serial number to S. No. 15000.  
15800-1000-2 is applicable to S. No. 15001 and above.
- Example-3 .....  indicates that the new and old parts are interchangeable.  
Both 15800-2000-0 and 15830-2000-0 are applicable to the first serial number and above.
- ⑨ REMARKS 1 ..... In this column, enter other applicable model names, dimensions and other special items.  
The following symbols and abbreviations are used throughout this book.  
29\*12.00-15 .... Tire size  
sq.m .... m<sup>2</sup>    sq.mm .... mm<sup>2</sup>  
cu.m .... m<sup>3</sup>    cu.mm .... mm<sup>3</sup>  
D .... Diameter    L .... Length
- ⑩ REMARKS 2 ..... The following expressions are used in NOTE for each group.  
Machines' serial numbers are indicated as follows.  
<=15000 .... Serial number below 15000.  
>=15001 .... Serial number above 15001.  
14000 to 15000 .... Serial number 14000 to 15000.  
For some models, the above expressions may also be used REMARKS 1 ⑨.
- ⑪ Specifications ..... The types and destinations of sister models are indicated. These indications are  
(for sister models) given to tell their relevant pages in this book.

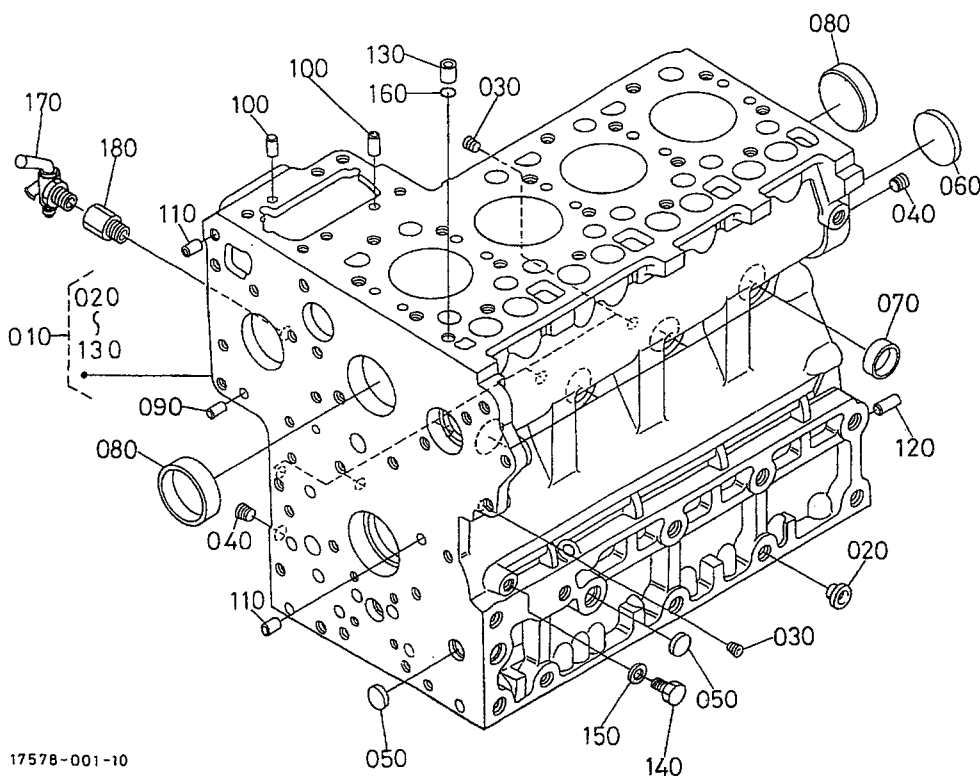
## CONTENTS

---

[V1903-EBG-EPS-1, V1903-BG-EPS-1]

0001	CRANKCASE.....	B01-L
0002	OIL PAN.....	B01-R
0003	CYLINDER HEAD.....	B02-L
0004	GEAR CASE.....	B02-R
0005	HEAD COVER.....	B03-R
0006	OIL FILTER.....	B04-L
0007	DIPSTICK AND GUIDE.....	B04-R
0008	OIL PUMP.....	B05-L
0010	BREATHER.....	B05-R
0100	MAIN BEARING CASE.....	B06-L
0101	CAMSHAFT AND IDLE GEAR SHAFT.....	B06-R
0102	PISTON AND CRANKSHAFT.....	B07-L
0103	FLYWHEEL.....	B08-L
0105	FUEL CAMSHAFT AND GOVERNOR SHAFT.....	B08-R
0200	IDLE APPARATUS.....	B09-L
0202	INJECTION PUMP.....	B09-R
0203	INJECTION PUMP (COMPONENT PARTS).....	B10-L
0204	GOVERNOR.....	B10-R
0205	SPEED CONTROL PLATE.....	B11-L
0206	NOZZLE HOLDER AND GLOW PLUG.....	B11-R
0300	FUEL FILTER.....	B12-L
0301	FUEL PUMP (MECHANICAL).....	B12-R
0402	ALTERNATOR AND PULLEY.....	B13-L
0403	ALTERNATOR (COMPONENT PARTS).....	B13-R
0404	STARTER.....	B14-L
0405	STARTER (COMPONENT PARTS).....	B14-R
0406	OIL SWITCH/THERMOMETER AND PLUG.....	B15-L
0500	WATER FLANGE AND THERMOSTAT.....	B15-R
0501	WATER PUMP.....	B16-L
0504	FAN.....	B16-R
0600	VALVE AND ROCKER ARM.....	C01-L
0601	INLET MANIFOLD.....	C01-R
0602	EXHAUST MANIFOLD.....	C02-L
0801	STARTER SWITCH.....	C02-R
0808	ACCESSORIES AND SERVICE PARTS.....	C03-L
0809	LABEL AND OPERATOR'S MANUAL.....	C03-R
■	NUMERICAL INDEX.....	D01-L

0001 CRANKCASE



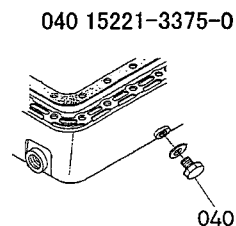
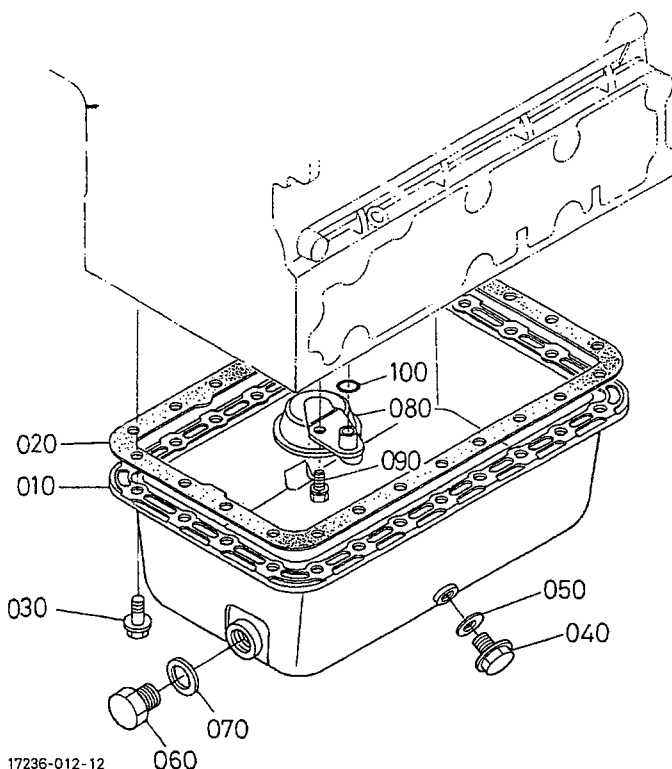
17578-001-10

A:V1903-EBG-EPS-1 B:V1903-BG-EPS-1

REF. No.	PART No.	PART NAME	Q' TY/S. No.		I. C.	REMARKS
			A	B		
010	16458-0101-2	COMP. CRANKCASE	1 ≤300323	1 ≤300323	#	
010	16458-0101-4	COMP. CRANKCASE	1 ≥3S0001	1 ≥3S0001	≠	#
010	17569-0101-6	COMP. CRANKCASE	1 ≥4U0001	-	≠	#
020	32210-2758-0	PLUG	2	2		
030	15521-9602-0	PLUG	6	6		
040	15521-9603-0	PLUG	2	2		
050	17391-9616-0	PLUG, EXPANSION	3	3		
060	06311-75045	PLUG, EXPANSION	1 ≤3G0331	1 ≤3G0331	#	
060	16271-9616-0	PLUG, EXPANSION	1 ≥3J0001	1 ≥3J0001	≠	#
070	15221-0338-0	CAP, SEALING	6	6		
080	15221-0339-0	CAP, SEALING	2	2		
090	05012-00408	PIN, STRAIGHT	2	2		
100	05012-00609	PIN, STRAIGHT	2	2		
110	05012-00612	PIN, STRAIGHT	2	2		
120	05012-01018	PIN, STRAIGHT	1	1		
130	15221-3365-0	PIN, PIPE	1	1		
140	15221-3361-0	PLUG	1 ≤4E0397	1 ≤4E0397	#	
140	15469-3361-0	PLUG	1 ≥4G0001	1 ≥4G0001	↔	#
150	15021-3366-0	GASKET	1	1		
160	15221-3370-0	O RING	1	1		
170	15575-7310-0	COCK, DRAIN	1	1		
180	15291-7316-0	JOINT, DRAIN COCK	1	1		

↔ Interchangeable; ≠ not interchangeable; ← new for old; → old for new

# 0002 OIL PAN



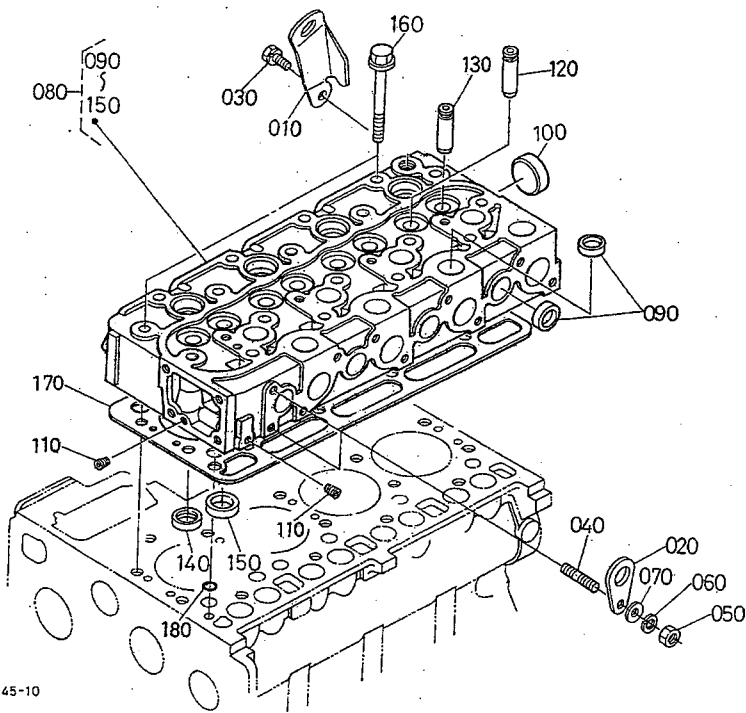
1G607-835-10

A:V1903-EBG-EPS-1 B:V1903-BG-EPS-1

REF. No.	PART No.	PART NAME	Q' TY/S. No.		I. C.	REMARKS
			A	B		
010	15434-0161-3	OIL PAN	1	1		
020	19228-0162-0	GASKET, OIL PAN	1	1	#	
020	1G780-0162-0	GASKET, OIL PAN	1	1	↔	#
030	17333-9101-0	BOLT, FLANGE	24	24	#	
030	17333-9101-3	BOLT, FLANGE	1	1	←	#
040	15221-3375-0	PLUG	1	1	#	
040	16326-3375-0	PLUG, DRAIN	1	1	↔	#
050	6C090-5896-0	GASKET	1	1		
060	15951-3375-0	PLUG, DRAIN	1	1		
070	04724-00160	GASKET	1	1		
080	15628-3211-0	FILTER, OIL	1	1		
090	01123-60816	BOLT	1	1		
100	04811-00160	O RING	1	1		
100	04817-00160	O RING	1	1	←	

↔ Interchangeable; ≠ not interchangeable; ← new for old; → old for new

# 0003 CYLINDER HEAD



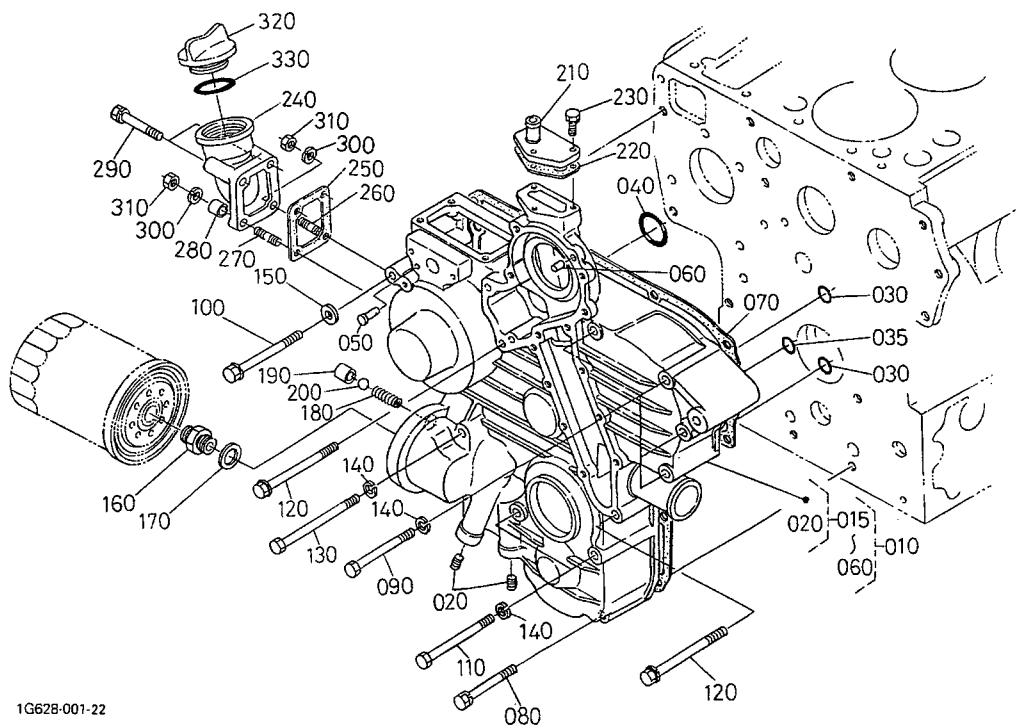
A:V1903-EBG-EPS-1 B:V1903-BG-EPS-1

REF. No.	PART No.	PART NAME	Q' TY/S. No.		I. C.	REMARKS
			A	B		
010	16415-0175-2	HOOK, ENGINE	1	1		
020	15221-0175-0	HOOK, ENGINE	1	1		
030	01123-60816	BOLT	1	1		
040	15221-9153-0	STUD	2	2		
050	02156-50080	NUT	1	1		
060	04512-60080	WASHER, SPRING	1	1		
070	04012-50080	WASHER, PLAIN	1	1		
080	16454-0304-0	COMP. CYLINDER HEAD	≤3N0396	≤3N0396		
080	16454-0304-4	COMP. CYLINDER HEAD	≥300001	≥300001	≠	
080	16454-0304-5	COMP. CYLINDER HEAD	≥4N0001	≥4N0001	←	
090	15221-0337-0	CAP, SEALING	12	12		
100	15221-0349-0	CAP, SEALING	1	1		
110	15261-9601-0	PLUG	2	2		
120	17321-1358-0	GUIDE, INLET VALVE	4	4		
130	17321-1356-0	GUIDE, EXHAUST VALVE	4	4		#
130	1C010-1356-0	GUIDE, VALVE, EXHAUST	4	4	↔	#
140	16415-1362-0	SEAT, INLET VALVE	4	4		
150	16415-1361-2	SEAT, EXHAUST VALVE	4	4		
160	19013-0345-0	BOLT, CYLINDER HEAD	18	18		
170	16454-0331-0	GASKET, CYLINDER HEAD	1	1		
180	15221-3370-0	O RING	1	1		

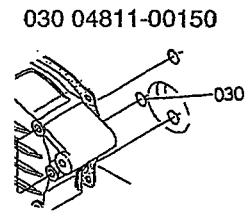
↔ Interchangeable; ≠ not interchangeable; ← new for old; → old for new



# 0004 GEAR CASE



1G628-001-22



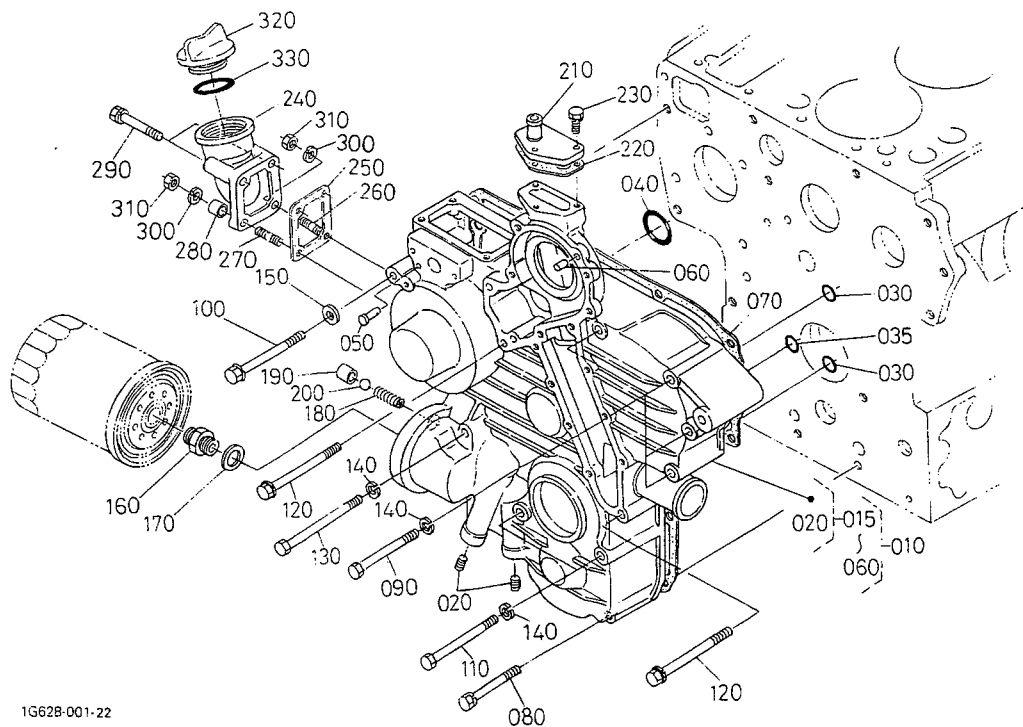
1G627-802-10

A:V1903-EBG-EPS-1 B:V1903-BG-EPS-1

REF. No.	PART No.	PART NAME	Q' TY/S. No.		I. C.	REMARKS
			A	B		
010	17182-0401-0	ASSY CASE, GEAR	1	1		# NOT SALE
015	17182-0402-0	COMP. CASE, GEAR	1	1		
020	16851-9601-0	PLUG	2	2		
030	04811-00150	O RING	3 ≤2A0408	3 ≤31527		
030	04811-00150	O RING	2 ≥2C0001	2 ≥31528		
030	04817-00150	O RING	2 ≥2L0001	2 ≥31528	←	
035	04811-00200	O RING	2 ≥2C0001	2 ≥31528		
035	04817-00200	O RING	2 ≥2L0001	2 ≥31528	←	
040	04811-00360	O RING	2 ≤2J0538	2 ≤31527		
040	04817-00360	O RING	2 ≥2L0001	2 ≥31528	←	
050	19818-5628-0	PIN, START SPRING	1	1		
060	05012-00612	PIN, STRAIGHT	2	2		
070	17089-0413-0	GASKET, GEAR CASE	1	1		
080	01123-50860	BOLT	2	2		
090	01153-50870	BOLT	5	5		
100	17367-9103-0	BOLT	1	1		
110	01153-50880	BOLT	2	2		
120	17367-9102-0	BOLT	3	3		
130	01153-50895	BOLT	2	2		
140	04512-60080	WASHER, SPRING	10	10		
150	04012-50080	WASHER, PLAIN	1	1		
160	15521-3229-0	JOINT, PIPE	1 ≤Y0783	1 ≤31317		
160	15521-3229-3	JOINT, PIPE	1 ≥Y0001	1 ≥31318	←	
160	1A021-3229-0	JOINT, PIPE	1 ≥400001	1 ≥400001	↔	
170	04011-50180	WASHER, PLAIN	1 ≤Y0783	1 ≤31317		
170	1G790-3230-2	COLLAR, VALVE SEAT	1 ≥Y0001	1 ≥31318	≠	
180	15241-3695-0	SPRING	1	1		
190	15521-3693-0	SEAT, VALVE	1	1		
200	07715-03213	BALL	1	1		
210	15521-7332-0	FLANGE, WATER RETURN	1	1		

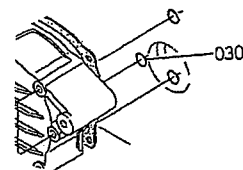
↔ Interchangeable; ≠ not interchangeable; ← new for old; → old for new

# 0004 GEAR CASE



1G628-001-22

030 04811-00150



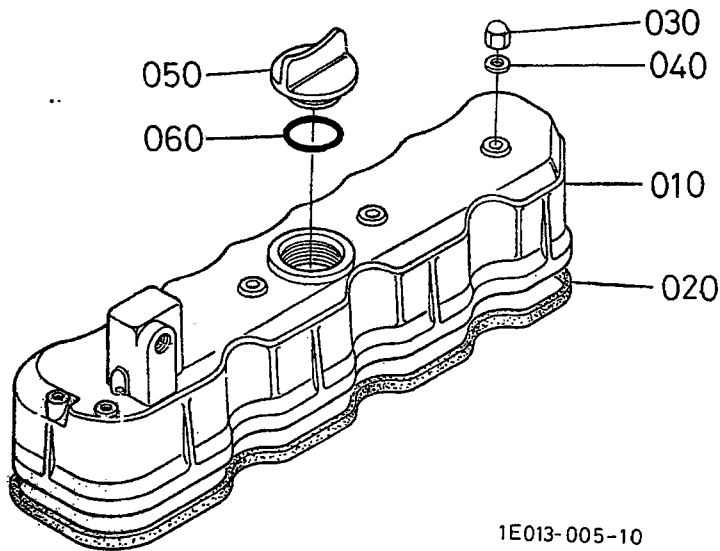
1G627-802-10

A:V1903-EBG-EPS-1 B:V1903-BG-EPS-1

REF. No.	PART No.	PART NAME	Q' TY/S. No.		I. C.	REMARKS
			A	B		
220	1A021-7333-0	GASKET, RETURN FLANGE	1	1		
230	01023-50620	BOLT	3	3		
240	16414-3311-0	FLANGE, OIL FILLER	1	1	#	
250	15472-5455-0	GASKET NA	1	1	#	
260	15221-8821-0	STUD	1	1	#	
270	17298-9151-0	STUD	1	1	#	
280	17298-9725-0	COLLAR	1	1	#	
290	01023-50645	BOLT	2	2		
300	04512-60060	WASHER, SPRING	2	2		
310	02056-50060	NUT	2	2		
320	15221-3314-0	PLUG, OIL FILLER	1	1	#	
330	04811-50300	O RING	<=2,0538	<=31527	#	
330	04817-50300	O RING	>=2L0001	>=31528	← #	

↔ Interchangeable; ≠ not interchangeable; ← new for old; → old for new

# 0005 HEAD COVER

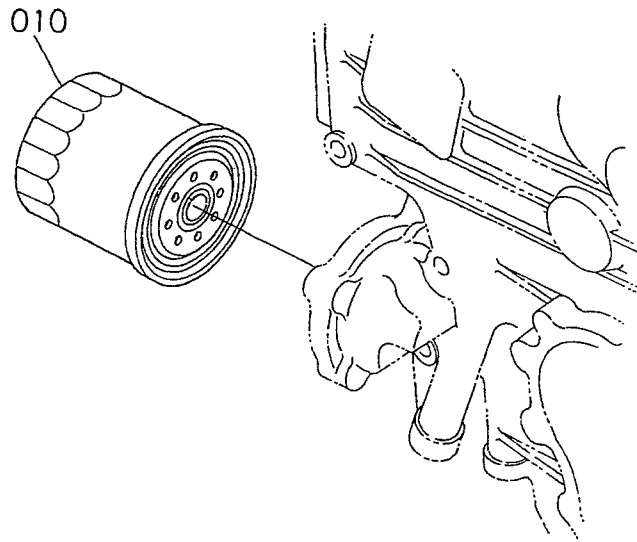


1E013-005-10

A:V1903-EBG-EPS-1 B:V1903-BG-EPS-1

REF. No.	PART No.	PART NAME	Q' TY/S. No.		I. C.	REMARKS
			A	B		
010	15434-1451-0	COVER, CYL. HEAD	1	1		
020	15471-1452-0	GASKET, HEAD COVER	1	1		
030	15451-9233-0	NUT	4	4		
040	15021-3366-0	GASKET	4	4		
050	15221-3314-0	PLUG, OIL FILLER	1	1		
060	04811-50300	O RING	1 <=>2J0538	1 <=>31527		#
060	04817-50300	O RING	1 >=2L0001	1 >=31528	←	#

↔ Interchangeable; ≠ not interchangeable; ← new for old; → old for new

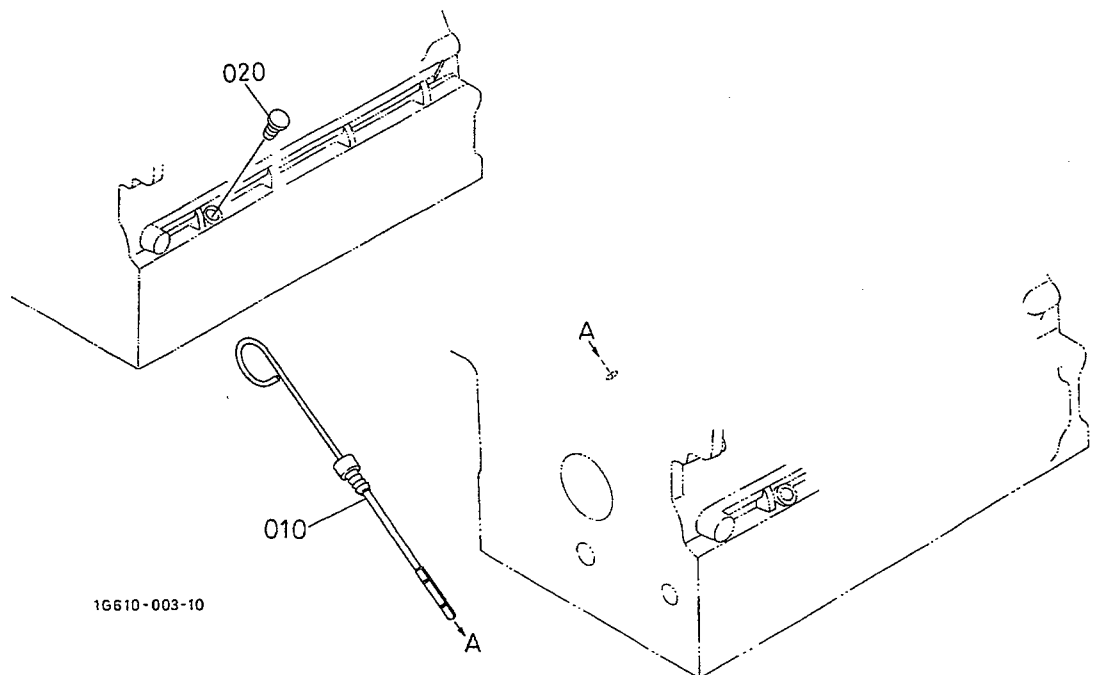


1G608-008-10

A:V1903-EBG-EPS-1 B:V1903-BG-EPS-1

REF.No.	PART No.	PART NAME	Q' TY/S. No.		I. C.	REMARKS
			A	B		
010	17321-3243-0	CARTRIDGE, OIL FILTER	~YW0783	~31317	↓	#
010	16414-3243-0	CARTRIDGE, OIL FILTER	YY0001~	31318~		#

# 0007 DIPSTICK AND GUIDE

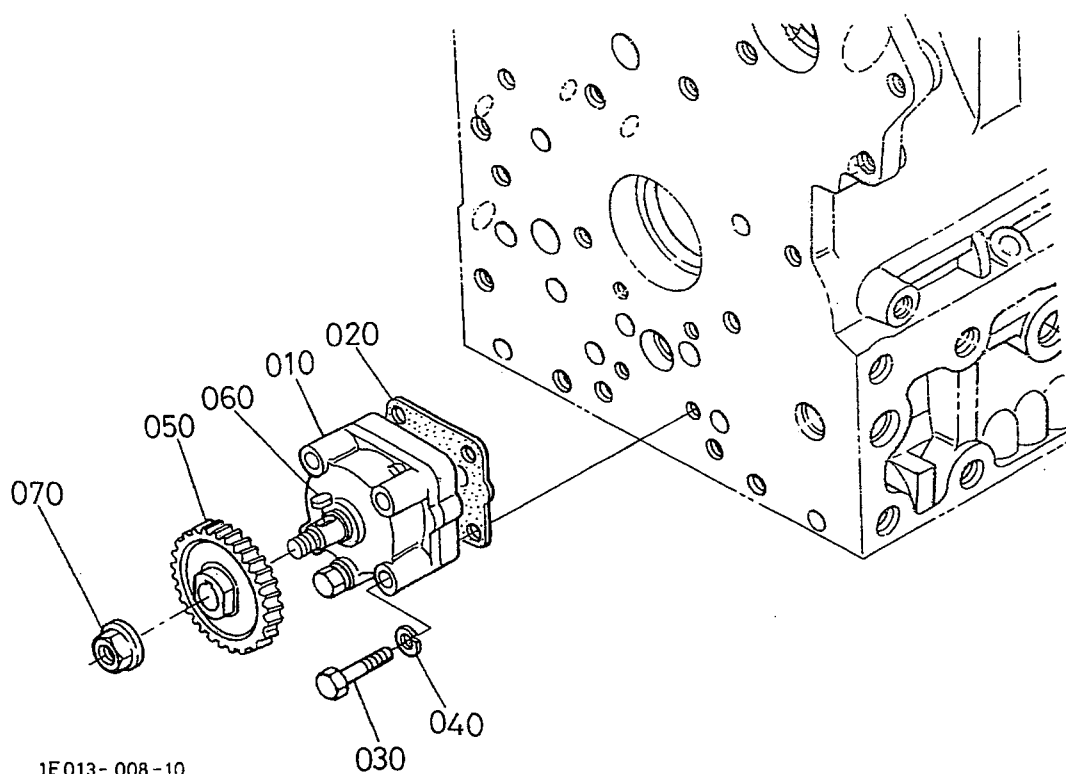


A:V1903-EBG-EPS-1 B:V1903-BG-EPS-1

REF. No.	PART No.	PART NAME	Q' TY/S. No.		I. C.	REMARKS
			A	B		
010	17111-3641-0	GAUGE, OIL	↑	↑		
020	19640-3364-0	PLUG, OIL GAUGE	↑	↑		
020	16414-3364-0	PLUG, OIL GAUGE	↑	↑	←	
020	1G513-3655-0	PLUG, OIL GAUGE	↑	↑	↔	#

↔ Interchangeable; ≠ not interchangeable; ← new for old; → old for new

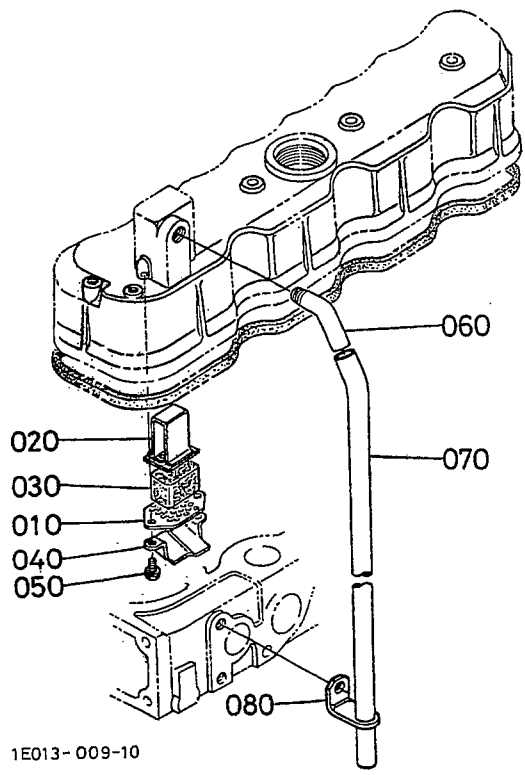
# 0008 OIL PUMP



1E013-008-10

A:V1903-EBG-EPS-1 B:V1903-BG-EPS-1

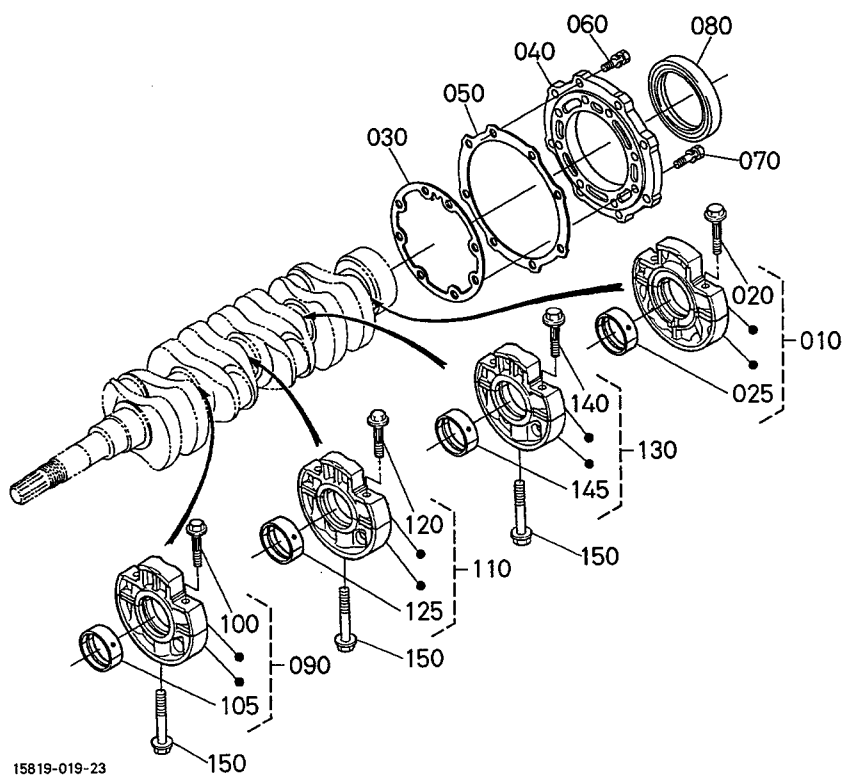
REF. No.	PART No.	PART NAME	Q' TY/S. No.		I. C.	REMARKS
			A	B		
010	15471-3501-2	ASSY PUMP, OIL	1 ≤4L0329	1 ≤4L0329		#
010	15471-3501-3	ASSY PUMP, OIL	1 ≥4N0001	1 ≥4N0001	↔	#
020	1A021-3515-0	GASKET, OIL PUMP	1	1		
030	01053-50650	BOLT	4	4		
040	04512-60060	WASHER, SPRING	4	4		
050	19202-3566-0	GEAR, OIL PUMP DRIVE	1	1		
060	05712-00410	KEY, FEATHER	1	1		
070	15221-3568-2	NUT, FLANGE	1	1		



A:V1903-EBG-EPS-1 B:V1903-BG-EPS-1

REF.No.	PART No.	PART NAME	Q' TY/S. No.		I. C.	REMARKS
			A	B		
010	15521-0514-0	PLATE, B/THER ELEMENT	1	1		
020	15521-0515-0	PLATE, B/THER ELEMENT	1	1		
030	15521-0567-0	ELEMENT, BREATHER	1	1		
040	15521-0537-0	OIL SHIELD, BREATHER	1	1		
050	03024-50510	SCREW, WITH WASHER	2	2		
060	15521-0555-0	JOINT, BREATHER PIPE	1	1		
070	15521-0551-0	PIPE, BREATHER	1	1		
080	15401-0558-0	CLAMP, PIPE	1	1		

0100 MAIN BEARING CASE



15819-019-23

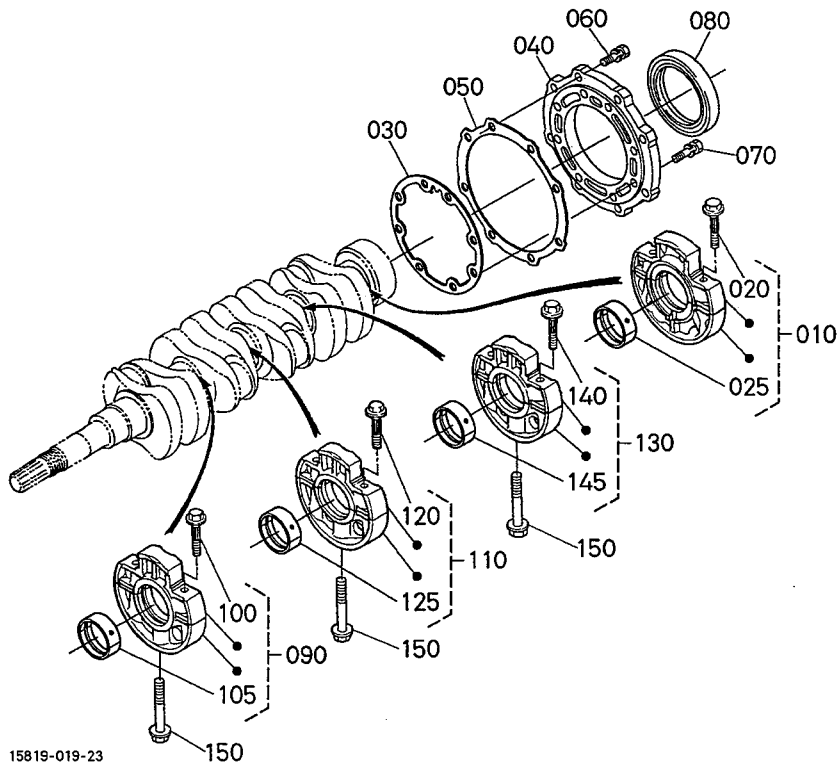
A:V1903-EBG-EPS-1 B:V1903-BG-EPS-1

REF. No.	PART No.	PART NAME	Q' TY/S. No.		I. C.	REMARKS
			A	B		
010	19013-0709-0	ASSY BRG. CASE, WHEEL	1 ≤=300323	1 ≤=300323		
010	1A041-0709-2	ASSY BRG. CASE, WHEEL	1 ≥=3S0001	1 ≥=3S0001	≠	
010	1A041-0709-3	ASSY BRG. CASE, WHEEL	1 ≥=3U0001	1 ≥=3U0001	←	
020	19013-0454-0	BOLT, BEARING CASE	2	2		
025	1A091-2348-0	METAL, CRANKSHAFT	1 ≥=3U0001	1 ≥=3U0001		STD SET
030	19077-0436-0	GASKET, BEARING CASE	1 ≤=3N0396	1 ≤=3N0396		
030	1A091-0436-2	GASKET, BEARING CASE	1 ≥=300001	1 ≥=300001	←	
040	19013-0481-3	COVER, BEARING CASE	1 ≤=300323	1 ≤=300323		
040	1G851-0481-0	COVER, BEARING CASE	1 ≥=3S0001	1 ≥=3S0001	←	
040	1G851-0481-2	COVER, BEARING CASE	1 ≥=4Y0001	1 ≥=4Y0001	←	#
050	1A091-0482-0	GASKET, CASE COVER	1	1		
060	01123-50825	BOLT	8	8		
070	01123-50828	BOLT	8	8		
080	19202-0446-0	SEAL, OIL	1 ≤=2S0470	1 ≤=2S0470		
080	1G911-0446-0	SEAL, OIL	1 ≥=2U0001	1 ≥=2U0001	←	
090	19013-0704-0	ASSY BRG. CASE, MAIN	1 ≤=300323	1 ≤=300323		
090	1A091-0704-2	ASSY BRG. CASE, MAIN	1 ≥=3S0001	1 ≥=3S0001	≠	
090	1A091-0704-3	ASSY BRG. CASE, MAIN	1 ≥=3U0001	1 ≥=3U0001	←	
100	19013-0454-0	BOLT, BEARING CASE	2	2		
105	1A091-2348-0	METAL, CRANKSHAFT	1 ≥=3U0001	1 ≥=3U0001		STD SET
110	19013-0705-0	ASSY BRG. CASE, MAIN	1 ≤=300323	1 ≤=300323		
110	1A091-0705-2	ASSY BRG. CASE, MAIN	1 ≥=3S0001	1 ≥=3S0001	≠	
110	1A091-0705-3	ASSY BRG. CASE, MAIN	1 ≥=3U0001	1 ≥=3U0001	←	
120	19013-0454-0	BOLT, BEARING CASE	2	2		
125	1A091-2348-0	METAL, CRANKSHAFT	1 ≥=3U0001	1 ≥=3U0001		STD SET
130	19013-0706-0	ASSY BRG. CASE, MAIN	1 ≤=300323	1 ≤=300323		
130	1A091-0706-2	ASSY BRG. CASE, MAIN	1 ≥=3S0001	1 ≥=3S0001	≠	
130	1A091-0706-3	ASSY BRG. CASE, MAIN	1 ≥=3U0001	1 ≥=3U0001	←	
140	19013-0454-0	BOLT, BEARING CASE	2	2		
145	1A091-2348-0	METAL, CRANKSHAFT	1 ≥=3U0001	1 ≥=3U0001		STD SET

↔ Interchangeable; ≠ not interchangeable; ← new for old; → old for new



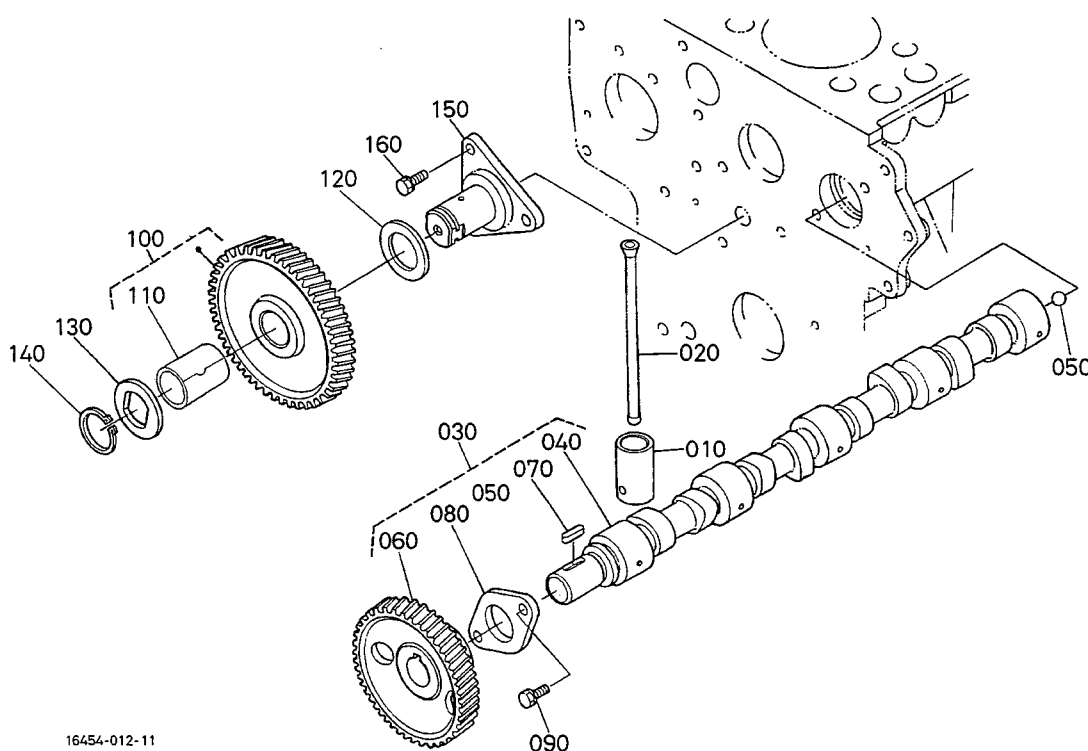
0100 MAIN BEARING CASE



A:V1903-EBG-EPS-1 B:V1903-BG-EPS-1

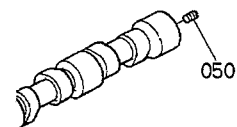
REF. No.	PART No.	PART NAME	Q' TY/S. No.		I. C.	REMARKS
			A	B		
150	15601-0456-0	BOLT, BEARING CASE	3	3		

# 0101 CAMSHAFT AND IDLE GEAR SHAFT



16454-012-11

050 15521-9361-0



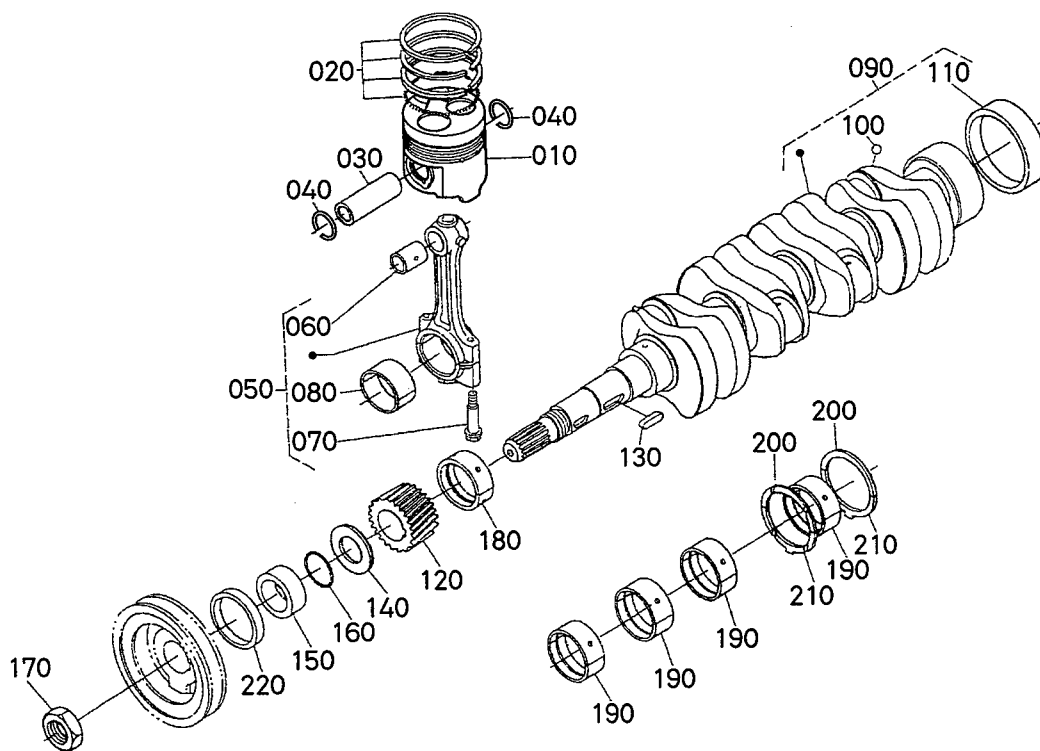
1G625-800-10

A:V1903-EBG-EPS-1 B:V1903-BG-EPS-1

REF. No.	PART No.	PART NAME	Q' TY/S. No.		I. C.	REMARKS
			A	B		
010	15601-1555-0	TAPPET	8	8		
020	19013-1511-0	PUSH ROD	8	8		
030	17343-1601-0	ASSY CAMSHAFT	1	1		
040	17343-1615-0	CAMSHAFT	≤3W0298	≤3W0298		# NOT SALE
040	17343-1615-4	CAMSHAFT	≥3Y0001	≥3Y0001	≠	# NOT SALE
050	15521-9361-0	SCREW, SET	≤3W0298	≤3W0298		#
050	07715-00401	BALL	≥3Y0001	≥3Y0001	≠	#
060	15521-1651-0	GEAR, CAMSHAFT	≤1W0523	≤31527		
060	15521-1651-4	GEAR, CAM	≥1Y0001	≥31528	←	
060	15521-1651-5	GEAR, CAM	≥3G0001	≥3G0001	←	#
070	05712-00720	KEY, FEATHER	1	1		
080	15221-1627-0	STOPPER, CAMSHAFT	1	1		
090	01123-50818	BOLT	2	2		
100	15221-2401-0	COMP. GEAR, IDLE	1	1		
110	16427-2498-0	BUSH, IDLE GEAR	1	1		
120	15521-2436-0	COLLAR	1	1		
130	15521-2437-0	COLLAR	1	1		
140	15221-2432-0	CIR CLIP, IDLE GEAR	1	1		
150	19818-2425-0	SHAFT, IDLE GEAR	1	1		
160	01123-50818	BOLT	3	3		

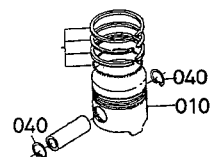
↔ Interchangeable; ≠ not interchangeable; ← new for old; → old for new

# 0102 PISTON AND CRANKSHAFT

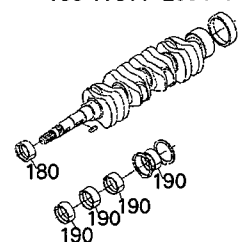


1G612-008-11

010 16427-2111-0  
010 16427-2191-0  
040 14109-2133-0



180 17311-2347-2  
180 17311-2391-0  
180 17311-2392-0  
190 17311-2348-0  
190 17311-2393-0  
190 17311-2394-0



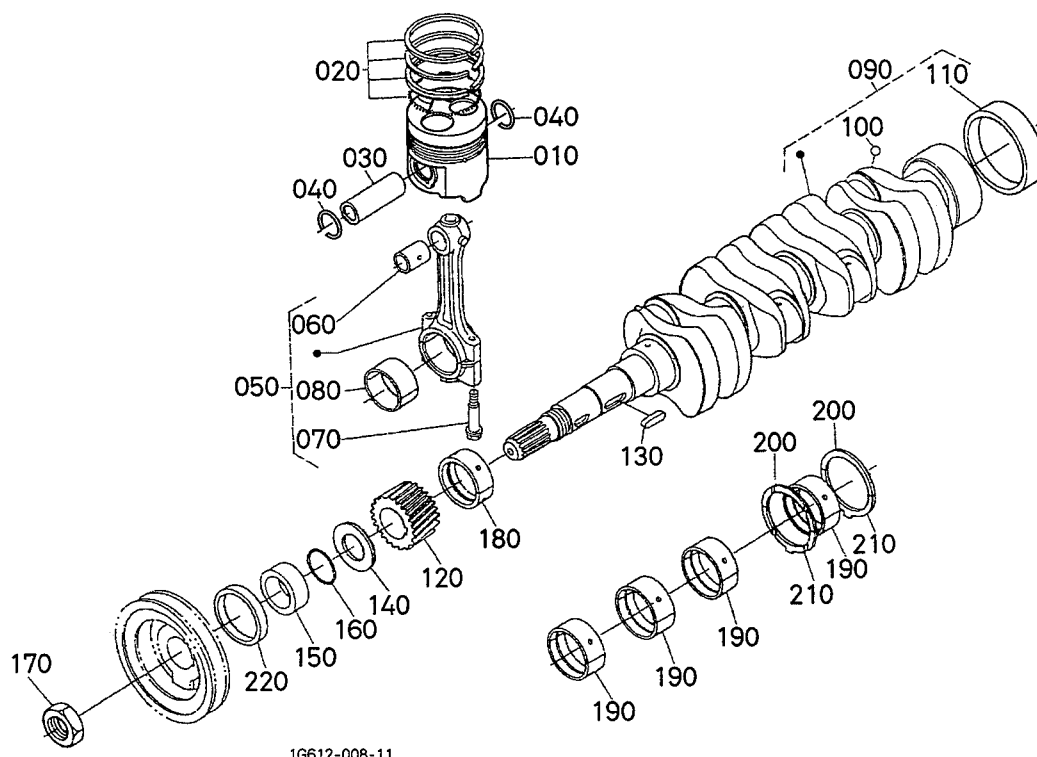
1G607-840-10

A:V1903-EBG-EPS-1 B:V1903-BG-EPS-1

REF. No.	PART No.	PART NAME	Q' TY/S. No.		I. C.	REMARKS
			A	B		
010	16427-2111-0	PISTON	4	4		# STD, NOT SALE
010	16427-2111-3	PISTON	≤4N0333	≤4N0333		
010	16427-2191-0	PISTON	≥4Q0001	≥4Q0001	≠	STD
010	16427-2191-3	PISTON	4	4		# +0.5mm, NOT SALE
010	16427-2191-3	PISTON	≤4N0333	≤4N0333		
010	16427-2191-3	PISTON	≥4Q0001	≥4Q0001	≠	+0.5mm
020	16427-2105-0	ASSY PISTON RING	4	4		STD
020	16427-2109-0	ASSY PISTON RING	4	4		+0.5mm
030	14901-2131-0	PIN, PISTON	4	4		
040	14109-2133-0	CIR GLIP, INTERNAL	4	4		
040	1G279-2133-0	CIR GLIP, INTERNAL	8	8		
040	1G279-2133-0	CIR GLIP, INTERNAL	≤4N0333	≤4N0333		
040	1G279-2133-0	CIR GLIP, INTERNAL	≥4Q0001	≥4Q0001	≠	
050	17311-2201-0	ASSY CONNECTING ROD	4	4		
060	17331-2198-0	BUSH, PISTON PIN	4	4		
070	15521-2214-2	BOLT, CONNECTING ROD	8	8		
080	17311-2231-0	METAL, CRANKPIN	4	4		STD SET
080	17331-2297-0	METAL, CRANKPIN	4	4		# -0.2mm SET
080	17311-2297-0	METAL, CRANKPIN	≤4U0469	≤4U0469		
080	17311-2297-0	METAL, CRANKPIN	≥4W0001	≥4W0001	↔	# -0.2mm SET
080	17331-2298-0	METAL, CRANKPIN	4	4		# -0.4mm SET
080	17311-2298-0	METAL, CRANKPIN	≤4U0469	≤4U0469		
080	17311-2298-0	METAL, CRANKPIN	≥4W0001	≥4W0001	↔	# -0.4mm SET
090	16641-2301-0	COMP. CRANKSHAFT	1	1		
090	17116-2301-3	COMP. CRANKSHAFT	≤3Q0323	≤3Q0323		
090	17116-2301-3	COMP. CRANKSHAFT	≥3S0001	≥3S0001	≠	
100	07715-00401	BALL	4	4		
110	19202-2328-0	BUSH, CRANKSHAFT	1	1		
120	15471-2411-0	GEAR, CRANK	1	1		
130	05712-00720	KEY, FEATHER	1	1		
140	15471-2331-2	SLINGER, OIL	1	1		
150	19202-2325-0	COLLAR, CRANKSHAFT	1	1		
160	04811-10300	O RING	1	1		
170	15221-2336-0	NUT, CRANKSHAFT	1	1		
180	17311-2347-2	METAL, CRANKSHAFT	1	1		STD
180	1A091-2347-0	METAL, CRANKSHAFT	≤3Q0323	≤3Q0323		
180	1A091-2347-0	METAL, CRANKSHAFT	≥3S0001	≥3S0001	≠	STD

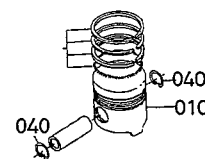
↔ Interchangeable; ≠ not interchangeable; ← new for old; → old for new

# 0102 PISTON AND CRANKSHAFT

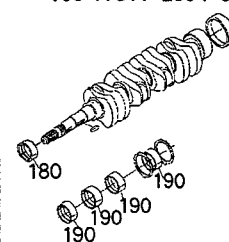


1G612-008-11

010 16427-2111-0  
010 16427-2191-0  
040 14109-2133-0



180 17311-2347-2  
180 17311-2391-0  
180 17311-2392-0  
190 17311-2348-0  
190 17311-2393-0  
190 17311-2394-0

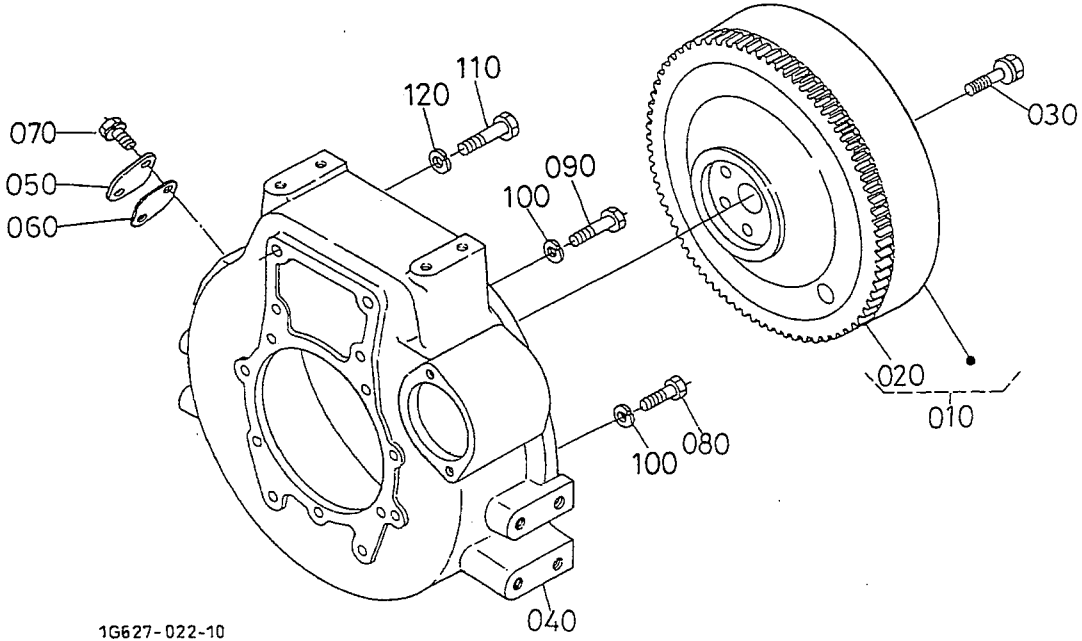


1G607-840-10

A:V1903-EBG-EPS-1 B:V1903-BG-EPS-1

REF.No.	PART No.	PART NAME	Q' TY/S. No.		I. C.	REMARKS
			A	B		
180	17311-2391-0	METAL, CRANKSHAFT	1 ≤300323	1 ≤300323		-0.2mm
180	1A091-2391-0	METAL, CRANKSHAFT	1 ≥3S0001	1 ≥3S0001	≠	-0.2mm
180	17311-2392-0	METAL, CRANKSHAFT	1 ≤300323	1 ≤300323		-0.4mm
180	1A091-2392-0	METAL, CRANKSHAFT	1 ≥3S0001	1 ≥3S0001	≠	-0.4mm
190	17311-2348-0	METAL, CRANKSHAFT	4 ≤300323	4 ≤300323		STD SET
190	1A091-2348-0	METAL, CRANKSHAFT	4 ≥3S0001	4 ≥3S0001	≠	STD SET
190	17311-2393-0	METAL, CRANKSHAFT	4 ≤300323	4 ≤300323		-0.2mm SET
190	1A091-2393-0	METAL, CRANKSHAFT	4 ≥3S0001	4 ≥3S0001	≠	-0.2mm SET
190	17311-2394-0	METAL, CRANKSHAFT	4 ≤300323	4 ≤300323		-0.4mm SET
190	1A091-2394-0	METAL, CRANKSHAFT	4 ≥3S0001	4 ≥3S0001	≠	-0.4mm SET
200	15521-2353-0	METAL, SIDE	2 ≤300323	2 ≤300323		STD
200	1A091-2353-0	METAL, SIDE	2 ≥3S0001	2 ≥3S0001	≠	STD
200	15521-2395-0	METAL, SIDE	2 ≤300323	2 ≤300323		+0.2mm
200	1A091-2395-0	METAL, SIDE	2 ≥3S0001	2 ≥3S0001	≠	+0.2mm
200	15521-2396-0	METAL, SIDE	2 ≤300323	2 ≤300323		+0.4mm
200	1A091-2396-0	METAL, SIDE	2 ≥3S0001	2 ≥3S0001	≠	+0.4mm
210	19202-2354-0	METAL, SIDE	2 ≤300323	2 ≤300323		STD
210	1A091-2354-0	METAL, SIDE	2 ≥3S0001	2 ≥3S0001	≠	STD
210	19202-2397-0	METAL, SIDE	2 ≤300323	2 ≤300323		+0.2mm
210	1A091-2397-0	METAL, SIDE	2 ≥3S0001	2 ≥3S0001	≠	+0.2mm
210	19202-2398-0	METAL, SIDE	2 ≤300323	2 ≤300323		+0.4mm
210	1A091-2398-0	METAL, SIDE	2 ≥3S0001	2 ≥3S0001	≠	+0.4mm
220	19202-0414-0	SEAL, OIL	1	1		

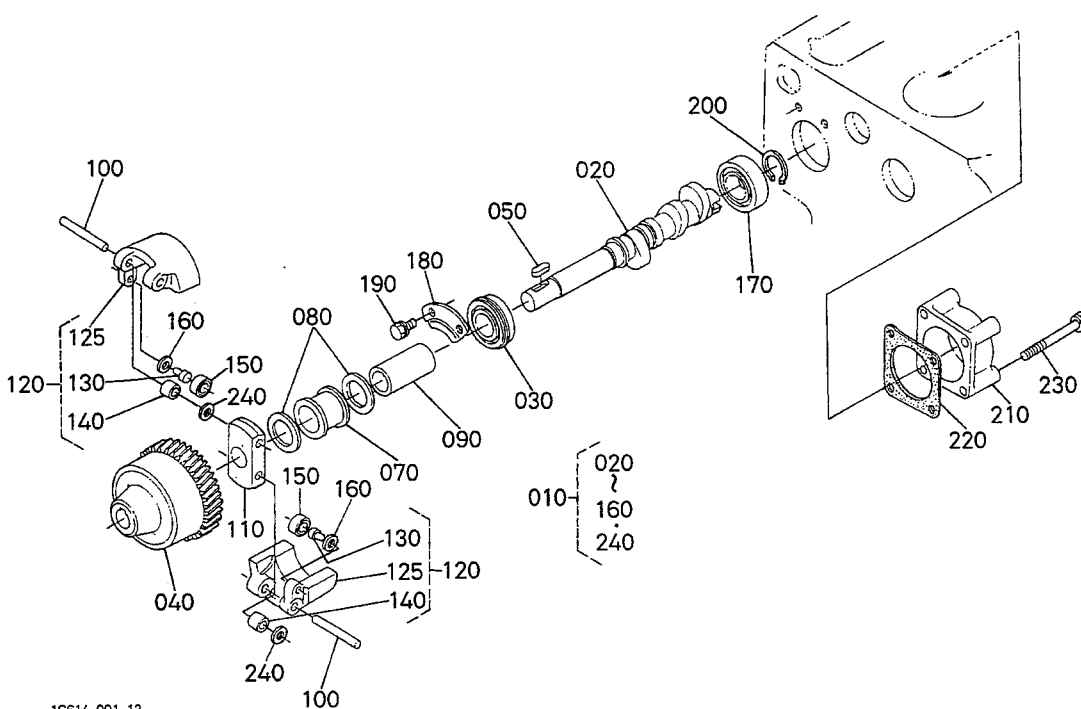
↔ Interchangeable; ≠ not interchangeable; ← new for old; → old for new



A:V1903-EBG-EPS-1 B:V1903-BG-EPS-1

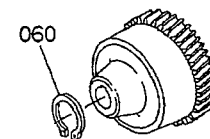
REF.No.	PART No.	PART NAME	Q' TY/S. No.		I. C.	REMARKS
			A	B		
010	19818-2501-0	COMP. FLYWHEEL	1	1		
020	15221-6382-0	GEAR, RING	1	1		
030	15321-2516-3	BOLT, FLYWHEEL	6	6		
040	16605-0461-0	HOUSING, FLYWHEEL	1	1		
050	15521-0468-0	COVER	1	1		
060	15521-0479-0	PACKING, COVER	1	1		
070	01123-50816	BOLT	2	2		
080	01073-51032	BOLT	8	8		
090	01073-51042	BOLT	3	3		
100	04512-50100	WASHER, SPRING	11	11		
110	01073-51250	BOLT	2	2		
120	04512-50120	WASHER, SPRING	2	2		

# 0105 FUEL CAMSHAFT AND GOVERNOR SHAFT



1G614-001-12

060 04612-00240



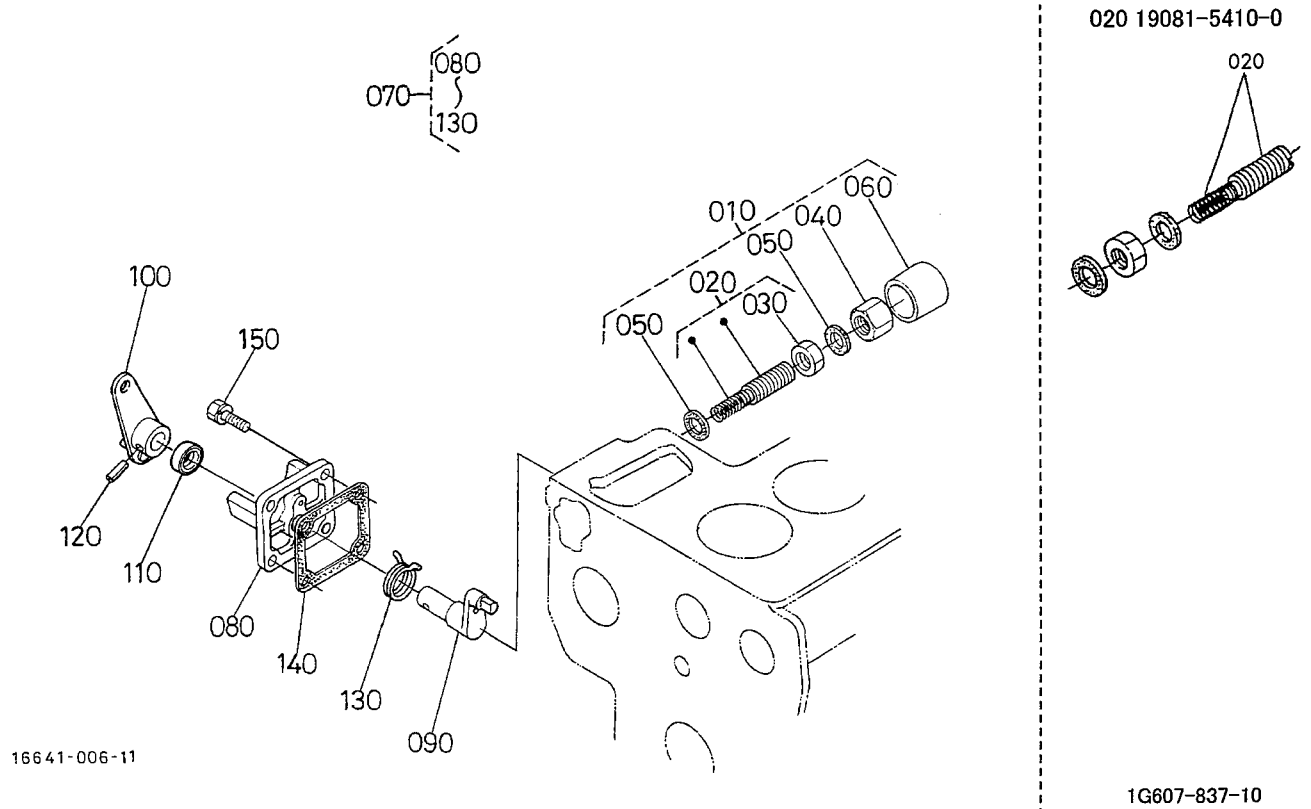
1G625-802-10

A:V1903-EBG-EPS-1 B:V1903-BG-EPS-1

REF. No.	PART No.	PART NAME	Q' TY/S. No.		I. C.	REMARKS
			A	B		
010	16662-1602-0	ASSY CAMSHAFT, FUEL	1	1		
020	16662-1617-0	CAMSHAFT, FUEL	1	1		
030	08153-06205	BEARING, BALL	1	1		
040	16662-5115-0	GEAR, INJECTION PUMP	1	1		
050	05712-00525	KEY, FEATHER	1	1		
060	04612-00240	CIR CLIP, EXTERNAL	1 ≤4E0397	1 ≤4E0397		#
070	19818-5545-0	SLEEVE, GOVERNOR	1	1		
080	19818-5546-0	WASHER, THRUST	2	2		
090	19818-5551-0	COLLAR, GOV. WEIGHT	1	1		
100	19818-5526-0	SHAFT, GOV. WEIGHT	2	2		
110	16662-5527-0	HOLDER, GOV. WEIGHT	1	1		
120	16662-5506-0	COMP. WEIGHT, GOVERNOR	2	2		
125	16662-5525-0	WEIGHT, GOVERNOR	2	2		
130	19818-5528-0	PIN, GOVERNOR WEIGHT	2	2		
140	19818-5538-0	BUSH, GOVERNOR	4	4		
150	19818-5560-0	BEARING	2	2		
160	19818-5534-0	WASHER	2	2		
170	08240-00001	BEARING, BALL	1 ≤2Y0196	1 ≤2Y0196		#
170	19077-9730-0	BEARING, BALL	1 ≥3A0001	1 ≥3A0001	↔	#
180	15221-1632-0	STOPPER, FUEL C/SHAFT	1	1		
190	01123-60814	BOLT	2	2		
200	04612-00250	CIR CLIP, EXTERNAL	1	1		
210	17183-1621-0	COVER, FUEL CAMSHAFT	1	1		
220	35394-3786-0	GASKET	1 ≤3W0298	1 ≤3W0298		#
220	1A051-1622-0	GASKET	1 ≥3Y0001	1 ≥3Y0001	↔	#
230	01123-50865	BOLT	4	4		
240	16662-5562-0	WASHER, PLAIN	4	4		

↔ Interchangeable; ≠ not interchangeable; ← new for old; → old for new

# 0200 IDLE APPARATUS

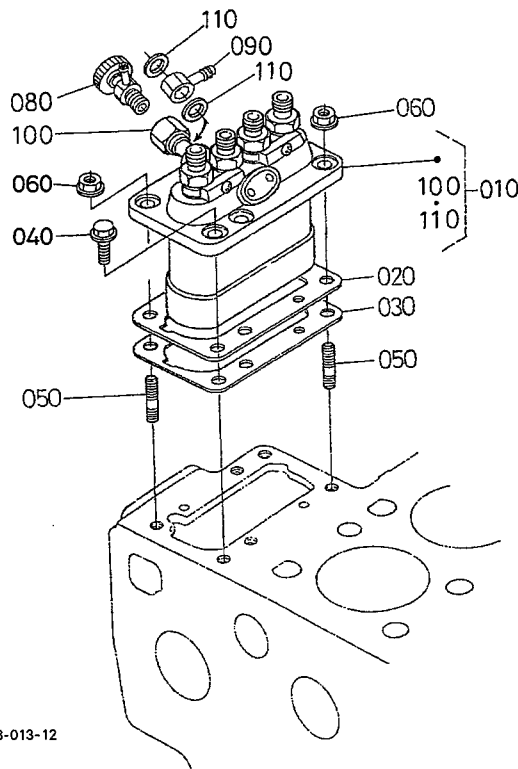


16641-006-11

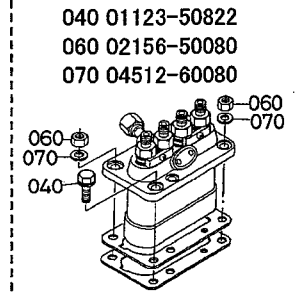
A:V1903-EBG-EPS-1 B:V1903-BG-EPS-1

REF. No.	PART No.	PART NAME	Q' TY/S. No.		I. C.	REMARKS
			A	B		
010	19081-5409-0	APPARATUS, IDLING	1	1		
020	19081-5410-0	ASSY BOLT, ADJUSTMENT	1 ≤460087	1 ≤460087		#
020	19081-5410-2	ASSY BOLT, ADJUSTMENT	1 ≥4J0001	1 ≥4J0001		← #
030	15401-9201-0	NUT	1	1		
040	15521-9233-0	NUT	1	1		
050	15021-3366-0	GASKET	2	2		
060	15521-5427-0	CAP	1	1		
070	16604-5770-0	ASSY LEVER, ENG. STOP	1	1		
080	15471-5165-2	COVER, INJECTION PUMP	1	1		
090	19821-5774-0	SHAFT, LEVER	1	1		
100	17331-5772-0	LEVER, ENGINE STOP	1	1		
110	15471-5798-0	SEAL, OIL	1	1		
120	05411-00420	PIN, SPRING	1	1		
130	15471-5792-0	SPRING, RETURN	1	1		
140	1A021-5166-0	GASKET, PUMP COVER	1	1		
150	01023-50618	BOLT	4	4		

# 0202 INJECTION PUMP



1G608-013-12



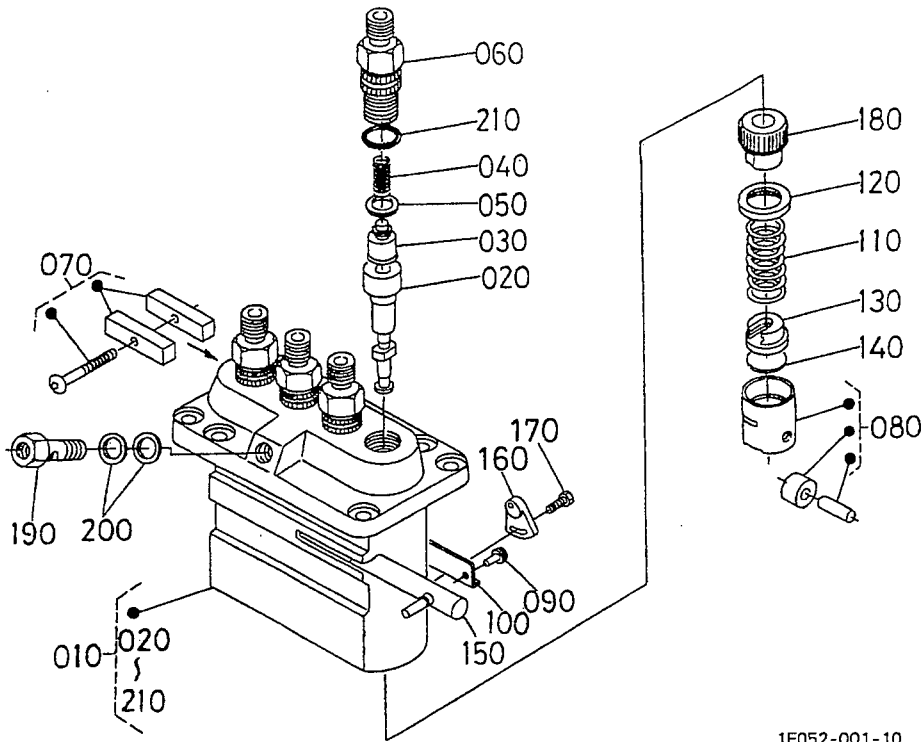
1G630-805-10

A:V1903-EBG-EPS-1 B:V1903-BG-EPS-1

REF. No.	PART No.	PART NAME	Q' TY/S. No.		I. C.	REMARKS
			A	B		
010	1G628-5101-0	ASSY PUMP, INJECTION	1	-		
010	17159-5101-0	ASSY PUMP, INJECTION	-	1		
020	19077-5209-0	SHIM, INJECTION PUMP	1 ≤=2G0380	1 ≤=31527		0.20mm
020	19077-5209-2	SHIM, INJECTION PUMP	1 ≥=2J0001	1 ≥=31528	≠	0.20mm
020	19077-5211-0	SHIM, INJECTION PUMP	1 ≤=2G0380	1 ≤=31527		0.25mm
020	19077-5211-3	SHIM, INJECTION PUMP	1 ≥=2J0001	1 ≥=31528	≠	0.25mm
030	19077-5212-0	SHIM, INJECTION PUMP	1 ≤=2G0380	1 ≤=31527		0.30mm
030	19077-5212-3	SHIM, INJECTION PUMP	1 ≥=2J0001	1 ≥=31528	≠	0.30mm
040	01123-50822	BOLT	4 ≤=4W0246	4 ≤=4W0246	#	
040	01754-50820	BOLT, FLANGE	4 ≥=4Y0001	4 ≥=4Y0001	←	#
050	15221-9153-0	STUD	2	2		
060	02156-50080	NUT	2 ≤=4W0246	2 ≤=4W0246	#	
060	02751-50080	NUT, FLANGE	2 ≥=4Y0001	2 ≥=4Y0001	←	#
070	04512-60080	WASHER, SPRING	2 ≤=4W0246	2 ≤=4W0246	#	
080	14311-6050-4	ASSY COCK, JET START	1	1		
090	15401-9569-0	JOINT, EYE	1	1		
100	15471-5132-0	SCREW, HOLLOW	1	1	#	
110	15401-9665-0	GASKET	2	2	#	

↔ Interchangeable; ≠ not interchangeable; ← new for old; → old for new



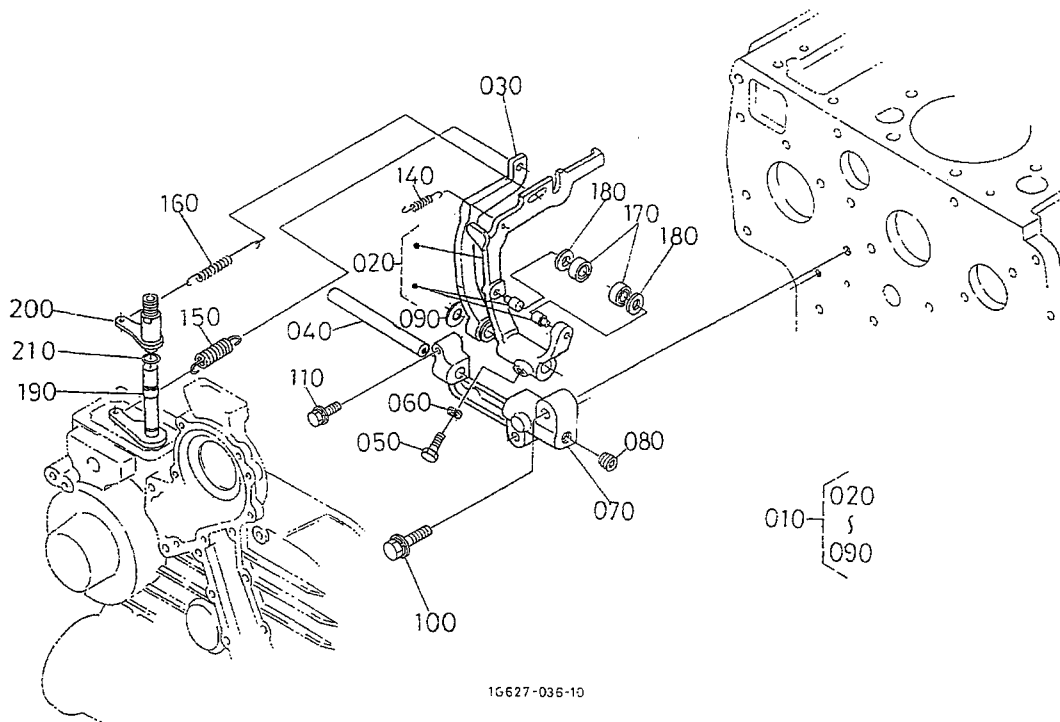


1E052-001-10

A:V1903-EBG-EPS-1 B:V1903-BG-EPS-1

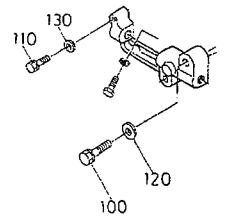
REF.No.	PART No.	PART NAME	Q' TY/S.No.		I. C.	REMARKS
			A	B		
010	16628-5101-0	ASSY PUMP, INJECTION	1	-		
010	17159-5101-0	ASSY PUMP, INJECTION	-	1		
020	16672-5105-0	PLUNGER, PUMP	4	4		
030	16475-5103-0	VALVE, DELIVERY	4	4		
040	16475-5123-0	SPRING, DELIV. VALVE	4	4		
050	15221-5124-0	GASKET, DELIV. VALVE	4	4		
060	16415-5122-0	HOLDER, DELIV. VALVE	4	4		
070	16475-5161-0	ASSY PLATE, LOCK	2	2		
080	15221-5107-0	ASSY TAPPET	4	4		
090	14611-5125-0	PIN, TAPPET GUIDE	4	4		
100	14611-5144-0	PLATE	2	2		
110	15221-5128-0	SPRING, PLUNGER	4	4		
120	15221-5127-0	SEAT, SPRING UPPER	4	4		
130	15221-5129-0	SEAT, SPRING LOWER	4	4		
140	19077-5149-0	SHIM	4	4		
150	15401-5106-0	RACK, CONTROL	1	1		
160	14384-5139-0	PLATE, ADJUSTING	3	3		
170	16454-9103-0	BOLT	3	3		
180	15221-5138-2	SLEEVE, CONTROL	4	4		
190	15471-5132-0	SCREW, FOLLOW	1	1		
200	15401-9665-0	GASKET	2	2		
210	14611-5120-0	O RING	4	4		

# 0204 GOVERNOR



1G627-036-10

100 01123-50832  
 110 01023-50628  
 120 04012-50080  
 130 04012-50060



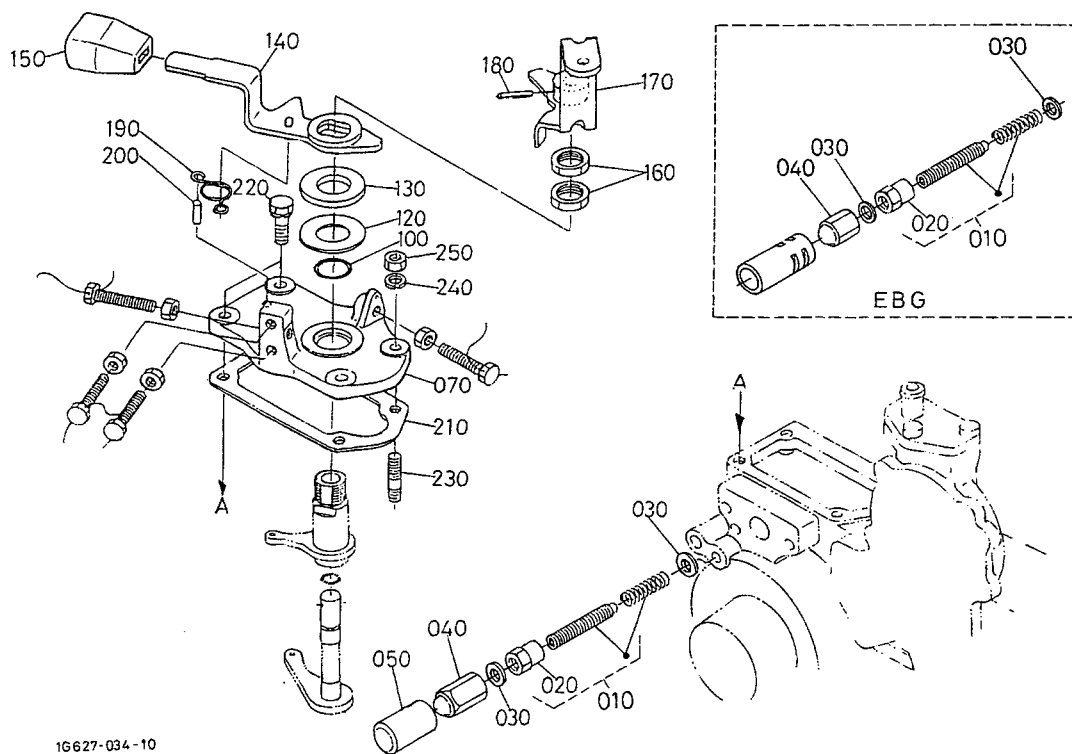
1G627-807-10

A:V1903-EBG-EPS-1 B:V1903-BG-EPS-1

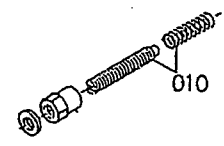
REF. No.	PART No.	PART NAME	Q' TY/S. No.		I. C.	REMARKS
			A	B		
010	19081-5605-0	ASSY LEVER, FORK	1	1		
020	17298-5604-0	ASSY LEVER, FORK	1	1		
030	19081-5613-0	LEVER, FORK	1	1		
040	16662-5610-0	COMP. SHAFT, FORK LEV.	1	1		
050	01053-50518	BOLT	1	1		
060	04512-60050	WASHER, SPRING	1	1		
070	19081-5620-0	COMP. HOLDER, FORK LE.	1	1		
080	03470-01010	SCREW, SET	1	1		
090	16241-9401-0	WASHER, PLAIN	2	2		
100	01123-50832	BOLT	2 ≤300323	2 ≤300323		#
100	01754-50830	BOLT, FLANGE	2 ≥3S0001	2 ≥3S0001	←	#
110	01023-50628	BOLT	1 ≤300323	1 ≤300323		#
110	01025-50630	BOLT	1 ≥3S0001	1 ≥3S0001	←	#
120	04012-50080	WASHER, PLAIN	2 ≤300323	2 ≤300323		#
130	04012-50060	WASHER, PLAIN	1 ≤300323	1 ≤300323		#
140	19818-5648-0	SPRING, START	1	1		
150	17158-5641-0	SPRING, GOVERNOR	1	1		
160	17182-5642-0	SPRING, GOVERNOR	1	1		
170	19818-5560-0	BEARING	2	2		
180	19818-5534-0	WASHER	2	2		
190	17076-5774-0	SHAFT, LEVER	1	1		
200	17076-5611-0	LEVER, GOVERNOR	1	1		
210	04811-10070	O RING	1	1		

↔ Interchangeable; ≠ not interchangeable; ← new for old; → old for new

# 0205 SPEED CONTROL PLATE



010 19818-5412-0



EBG

1G627-034-10

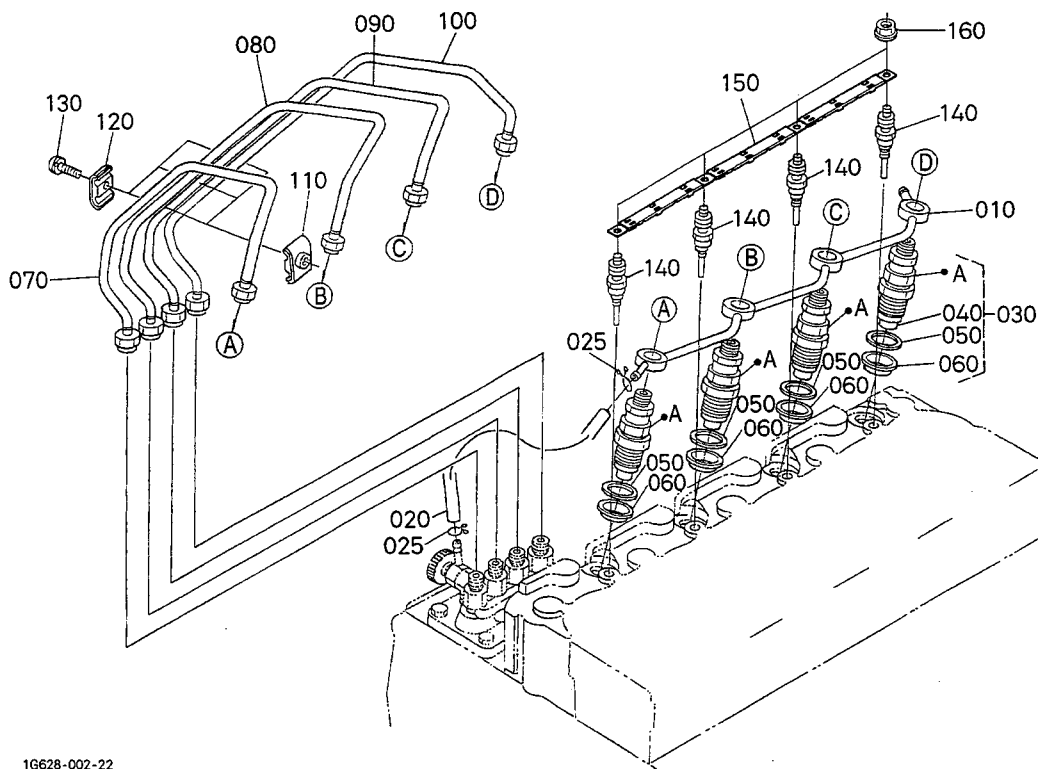
1G627-803-10

A:V1903-EBG-EPS-1 B:V1903-BG-EPS-1

REF. No.	PART No.	PART NAME	Q' TY/S. No.		I. C.	REMARKS
			A	B		
010	19818-5412-0	BOLT, ADJUSTING	1	1		#
010	1G628-5435-0	ASSY BOLT, ADJUSTMENT	<=2A0408	<=31527		#
020	15601-9201-2	NUT	1	1		← #
030	15601-9665-0	GASKET	2	2		
040	15841-1462-0	NUT	1	1		
050	16221-5442-0	CAP	-	1		#
060	---	BLANK	-	-		
070	17076-5711-0	PLATE, SPEED CONTROL	1	1		
080	---	BLANK	-	-		
090	---	BLANK	-	-		
100	04811-10160	O RING	1	1		
110	---	BLANK	-	-		
120	13622-1667-0	SHIM, CAMSHAFT	1	1		
130	17079-5738-0	COLLAR	1	1		
140	17076-5716-2	LEVER, CHANGE	1	1		
150	36919-2782-0	GRIP, PTO LEVER	1	1		
160	15841-9201-0	NUT, SPEED CONTROL	2	2		
170	17076-5715-2	LEVER, SPEED CONTROL	1	1		
180	05411-00318	PIN, SPRING	1	1		
190	17076-5751-0	SPRING, CHANGE	1	1		
200	05012-00412	PIN, STRAIGHT	1	1		
210	15439-5721-0	GASKET	1	1		
220	01023-50620	BOLT	2	2		
230	15221-8821-0	STUD	2	2		
240	04512-60060	WASHER, SPRING	2	2		
250	02056-50060	NUT	2	2		

↔ Interchangeable; ≠ not interchangeable; ← new for old; → old for new

# 0206 NOZZLE HOLDER AND GLOW PLUG

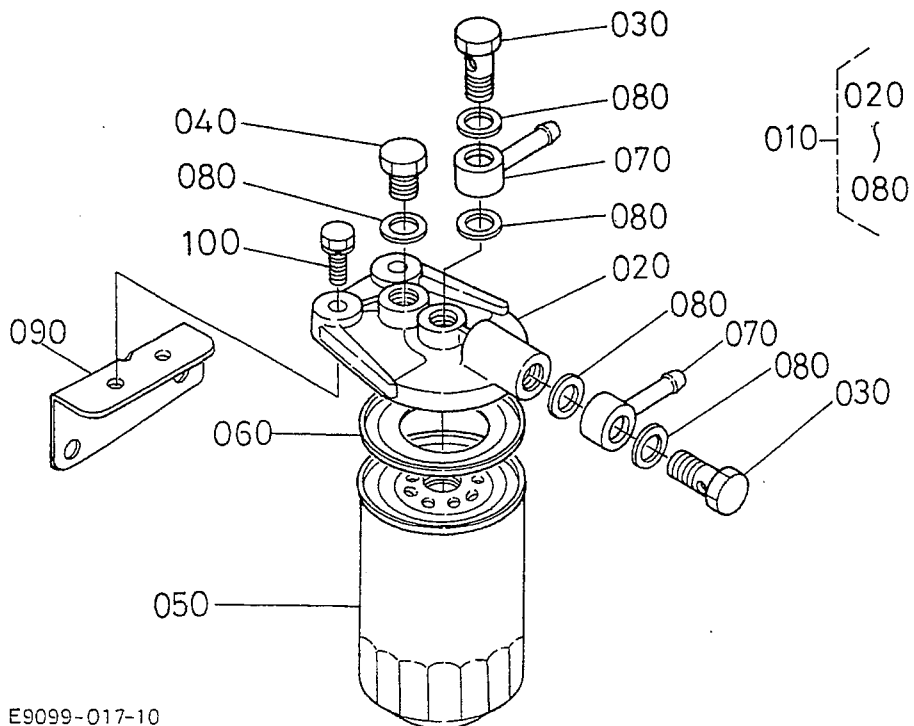


1G628-002-22

A:V1903-EBG-EPS-1 B:V1903-BG-EPS-1

REF. No.	PART No.	PART NAME	Q' TY/S. No.		I. C.	REMARKS
			A	B		
010	16454-4250-2	ASSY PIPE, OVER FLOW	1	1		
020	09661-40240	TUBE, FUEL	1	1		#
025	10244-4232-0	CLIP, PIPE	2	2		#
030	16454-5390-0	KIT HOLDER, NOZZLE	4	4		#
040	16454-5361-0	PIECE, NOZZLE	4	4		#
050	15841-5362-2	GASKET	4	4		
060	19077-5365-0	SEAL, HEAT	4	4		
070	19077-5371-4	PIPE, INJECTION	1	1		
080	19077-5372-3	PIPE, INJECTION	1	1		
090	19077-5373-3	PIPE, INJECTION	1	1		
100	19077-5374-3	PIPE, INJECTION	1	1		
110	15841-5385-0	CLAMP, PIPE	3	3		
120	15841-5386-0	CLAMP, PIPE	3	3		
130	03024-50520	SCREW, WITH WASHER	3	3		
140	19077-6551-0	GLOW PLUG	4	4		
150	16475-6556-0	CORD, GLOW PLUG	1 <=4Q0294	1 <=4Q0294		#
150	1G778-6556-0	CORD, GLOW PLUG	1 >=4S0001	1 >=4S0001	↔	#
160	02761-50040	NUT, FLANGE	4	4		

↔ Interchangeable; ≠ not interchangeable; ← new for old; → old for new

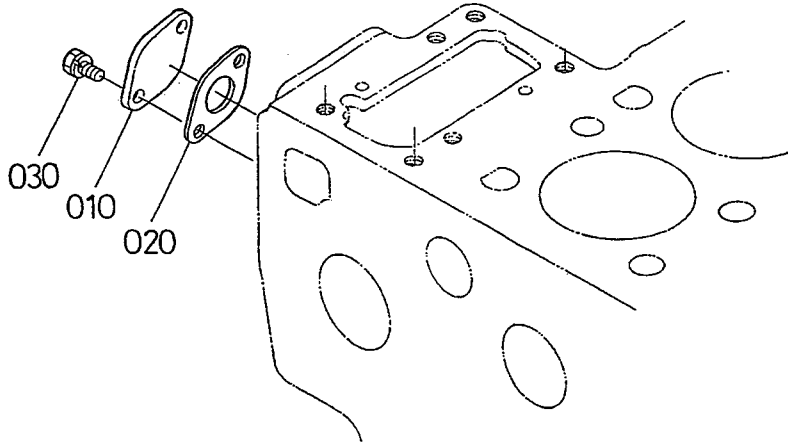


E9099-017-10

A:V1903-EBG-EPS-1 B:V1903-BG-EPS-1

REF.No.	PART No.	PART NAME	Q' TY/S. No.		I. C.	REMARKS
			A	B		
010	19077-4301-2	ASSY FILTER, FUEL	1	1		
020	16551-4321-0	COVER, FILTER	1	1		
030	16541-9579-0	BOLT, JOINT	2	2		
040	19077-4328-0	PLUG	1	1		
050	16631-4356-0	ELEMENT, FUEL FILTER	1	1		
060	16541-4333-0	GASKET	1	1		
070	19077-4361-0	CONNECTOR	2	2		
080	17105-3368-0	GASKET	5	5		
090	17298-4343-0	HOLDER, FUEL FILTER	1	1		
100	01133-51025	BOLT	2	2		

# 0301 FUEL PUMP (MECHANICAL)



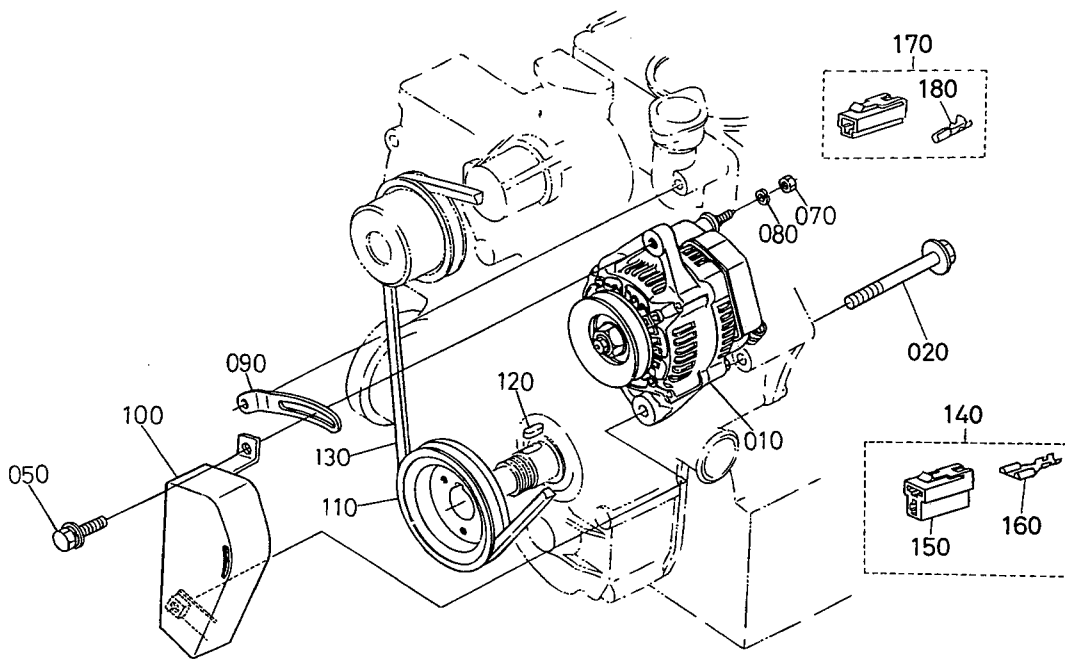
16454-082-10

A:V1903-EBG-EPS-1 B:V1903-BG-EPS-1

REF. No.	PART No.	PART NAME	Q' TY/S. No.		I. C.	REMARKS
			A	B		
010	15426-5285-0	COVER	1 ≤4S0282	1	#	
020	1A021-5214-0	GASKET, FUEL PUMP	1 ≤3W0298	1 ≤3W0298	#	
020	1G751-5214-0	GASKET, FUEL PUMP	1 ≥3Y0001	1 ≥3Y0001	↔ #	
020	1G751-5214-0	GASKET, FUEL PUMP	1 ≤4S0282	-	#	
030	01023-50616	BOLT	2 ≤4S0282	2	#	

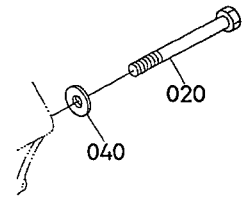
↔ Interchangeable; ≠ not interchangeable; ← new for old; → old for new

# 0402 ALTERNATOR AND PULLEY

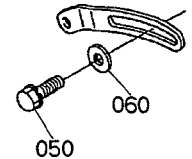


1G610-020-12

020 01173-51001  
040 04012-50100



050 01123-50830  
060 04015-60080



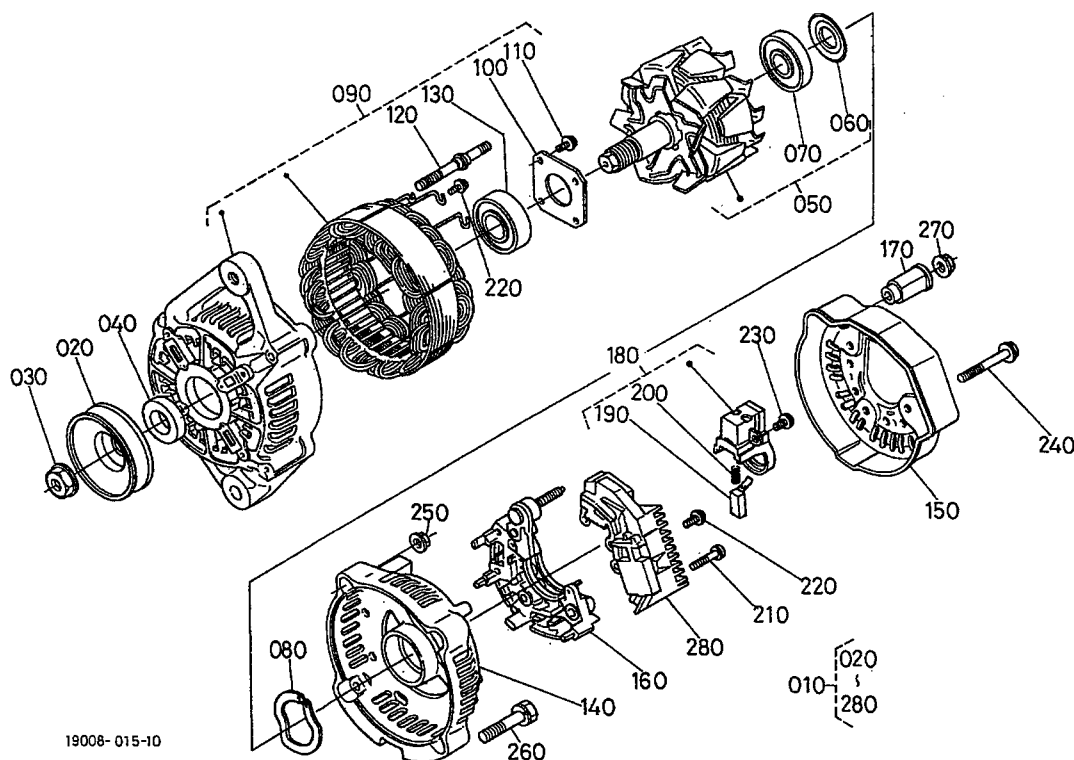
1G608-825-10

A: V1903-EBG-EPS-1 B: V1903-BG-EPS-1

REF. No.	PART No.	PART NAME	Q' TY/S. No.		I. C.	REMARKS
			A	B		
010	34070-7560-0	ASSY ALTERNATOR	≤1N1382	≤31527		
010	34070-7560-2	ASSY ALTERNATOR	≥1Q0001	≥31528	←	
020	01173-51004	BOLT	≤4N0333	≤4N0333		
020	01173-51001	BOLT	≥4Q0001	≥4Q0001	≠	
020	01774-51000	BOLT, FLANGE	≥5A0001	≥5A0001	←	#
030	---	BLANK	-	-		
040	04012-50100	WASHER, PLAIN	≤4Y0304	≤4Y0304		#
050	01123-50830	BOLT	≤2U0273			
050	01127-50830	BOLT	≥2W0001		←	
060	04015-60080	WASHER, PLAIN	≤2U0273			
070	02056-50060	NUT	1	1		
080	04512-60060	WASHER, SPRING	1	1		
090	16427-6442-0	STAY, DYNAMO	1	1		
100	16665-1386-0	COVER, BELT	1	1		
110	15192-7428-2	PULLEY, FAN DRIVE	1	1		
120	05712-00720	KEY, FEATHER	1	1		
130	15469-9701-0	V BELT, A	1	1		
140	19838-6583-0	ASSY COUPLER	1	1		
150	19872-6588-0	CONNECTOR	1	1		
160	19237-6591-0	TERMINAL	2	2		
170	16611-6583-0	ASSY COUPLER	1	1		
180	19844-6577-0	TERMINAL	1	1		

↔ Interchangeable; ≠ not interchangeable; ← new for old; → old for new

# 0403 ALTERNATOR (COMPONENT PARTS)



19008-015-10

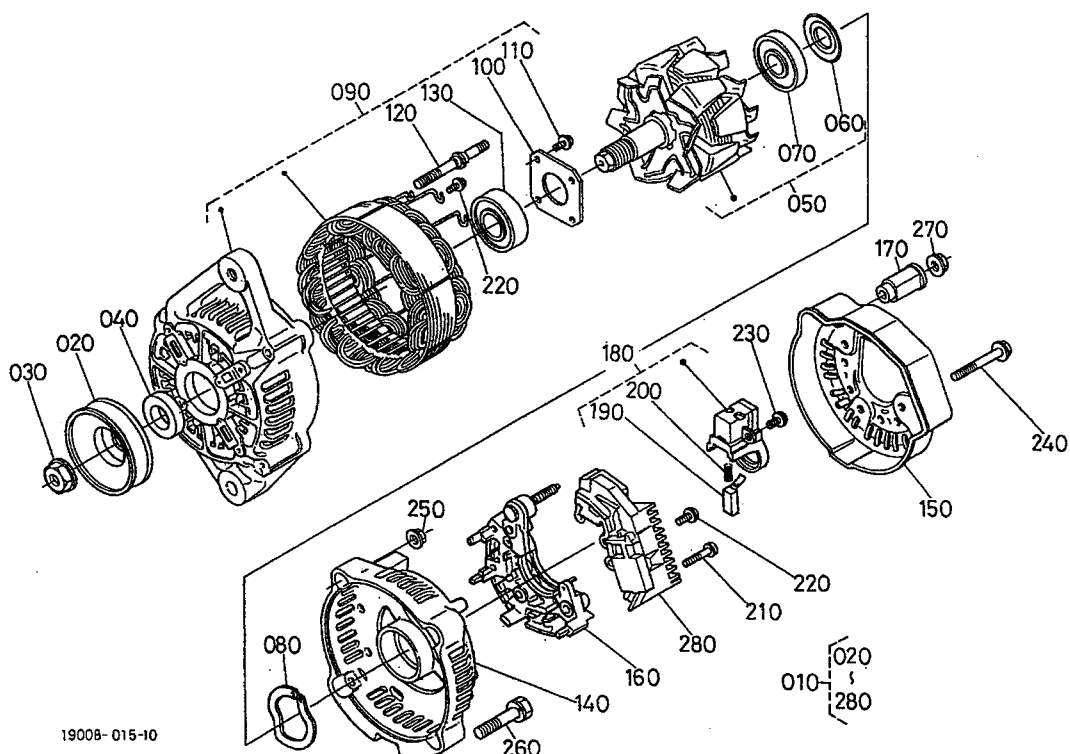
A:V1903-EBG-EPS-1 B:V1903-BG-EPS-1

REF. No.	PART No.	PART NAME	Q' TY/S. No.		I. C.	REMARKS
			A	B		
010	34070-7560-0	ASSY ALTERNATOR	1	1		
010	34070-7560-2	ASSY ALTERNATOR	≤=1N1382	≤=31527		
020	16427-6411-0	PULLEY, ALTERNATOR	≥=100001	≥=31528	←	
030	15881-9201-0	NUT	1	1		
040	15881-6415-0	COLLAR	1	1		
050	15881-6404-0	ROTOR	≤=1N1382	≤=31527		
050	66436-6404-0	ROTOR	≥=100001	≥=31528	←	
060	15881-6480-0	COVER, BEARING	1	1		
070	16652-6477-0	BEARING, BALL	1	1		
080	15881-6481-0	WASHER, THRUST	1	1		
090	16678-6402-0	ASSY FRAME, DRIVE END	1	1		
100	15881-6471-0	PLATE, RETAINER	1	1		
110	15881-9301-0	SCREW, ROUND HEAD	4	4		
120	15881-6426-0	BOLT, THROUGH	2	2		
130	16652-6478-0	BEARING, BALL	1	1		
140	16241-6406-0	FRAME, END	1	1		
150	16231-6423-0	COVER, END	1	1		
160	16241-6485-0	ASSY RECTIFIER	1	1		
170	16241-6490-0	BUSH, INSULATION	1	1		
180	16652-6431-0	HOLDER, BRUSH	1	1		
190	15881-6409-0	BRUSH	2	2		
200	15881-6433-0	SPRING, BRUSH	2	2		
210	15881-9302-0	SCREW, ROUND HEAD	2	2		
220	15881-9303-0	SCREW, ROUND HEAD	6	6		
230	15881-9304-0	SCREW, ROUND HEAD	1	1		
240	15881-9104-0	BOLT	3	3		
250	15881-9202-0	NUT	2	2		
260	15881-9105-0	BOLT	2	2		
270	14182-9203-0	NUT	1	1		

↔ Interchangeable; ≠ not interchangeable; ← new for old; → old for new



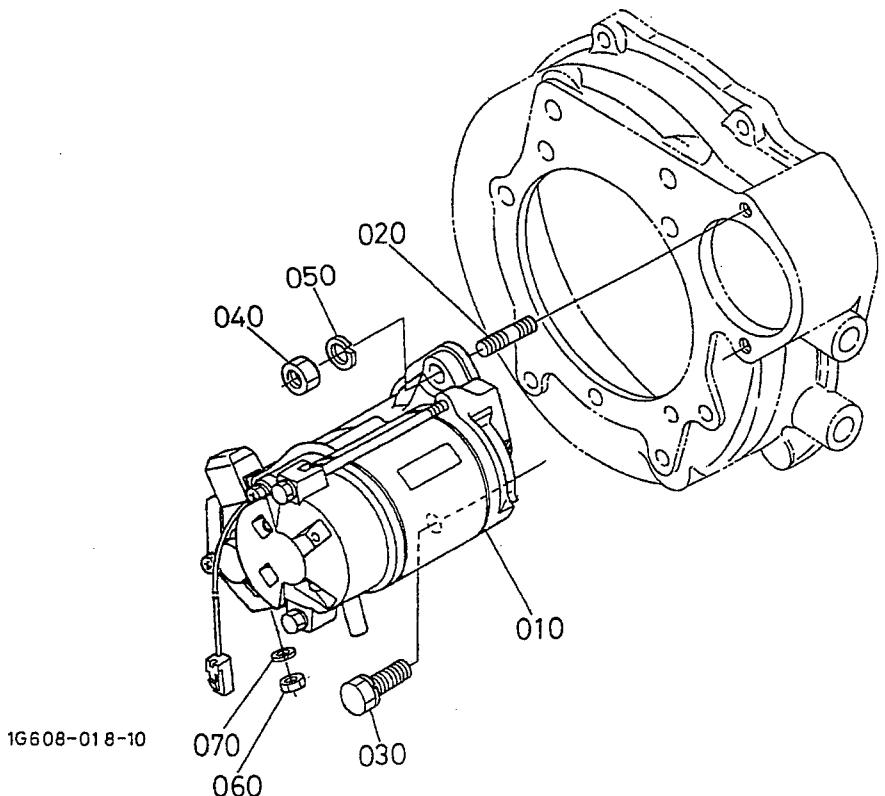
# 0403 ALTERNATOR (COMPONENT PARTS)



A: V1903-EBG-EPS-1 B: V1903-BG-EPS-1

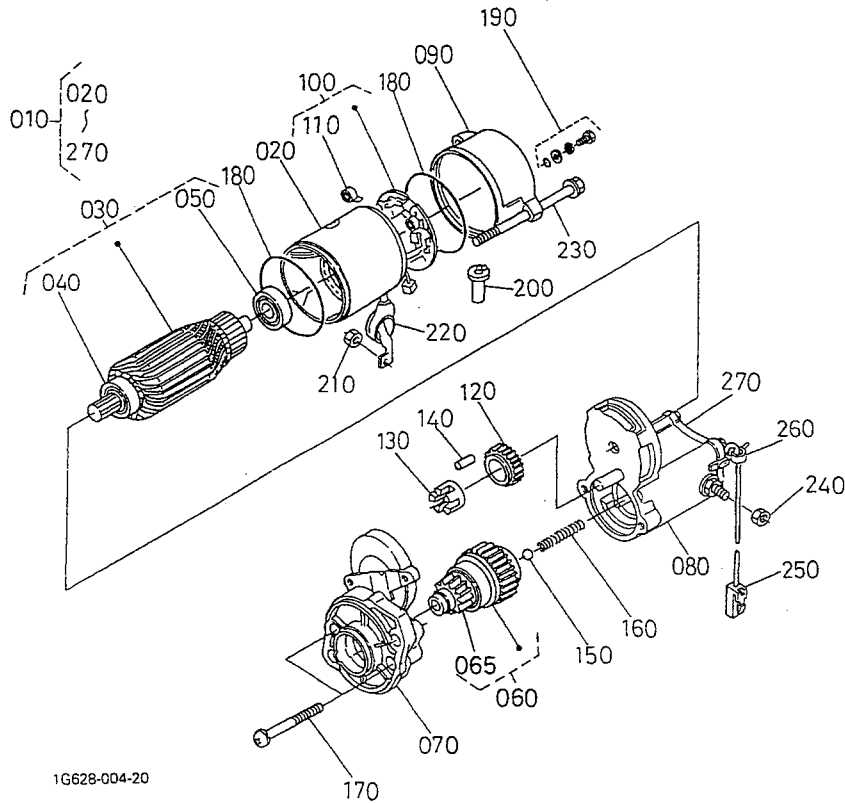
REF. No.	PART No.	PART NAME	Q' TY/S. No.		I. C.	REMARKS
			A	B		
280	66436-6460-0	ASSY REGULATOR	1	1		#
280	1K531-6460-2	ASSY REGULATOR	←=4S0282	←=4S0282		#
			1	1		#
			>=4U0001	>=4U0001	←	#

↔ Interchangeable; ≠ not interchangeable; ← new for old; → old for new



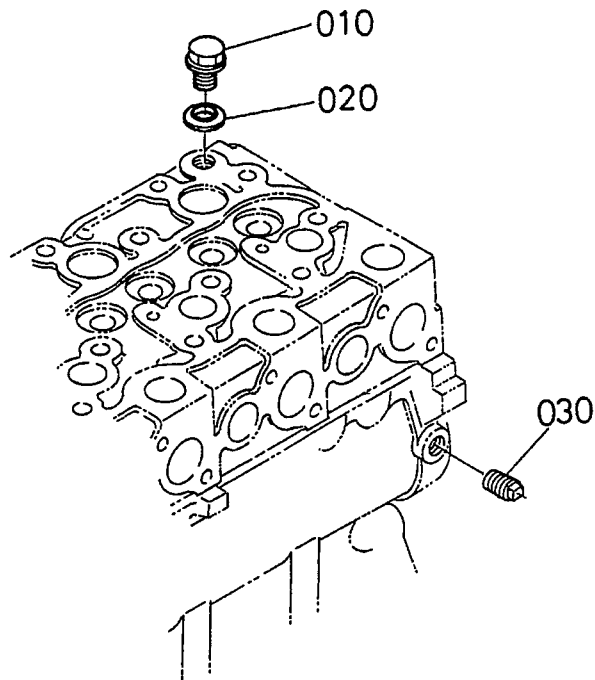
A:V1903-EBG-EPS-1 B:V1903-BG-EPS-1

REF.No.	PART No.	PART NAME	Q' TY/S. No.		I. C.	REMARKS
			A	B		
010	17298-6301-0	ASSY STARTER	1	1		12V 1.4KW
020	01517-51028	STUD	1	1		
030	01133-51030	BOLT	1	1		
040	02176-50100	NUT	1	1		
050	04512-50100	WASHER, SPRING	1	1		
060	02114-50080	NUT	1	1		
070	04512-50080	WASHER, SPRING	1	1		



A:V1903-EBG-EPS-1 B:V1903-BG-EPS-1

REF.No.	PART No.	PART NAME	Q' TY/S. No.		I. C.	REMARKS
			A	B		
010	17298-6301-0	ASSY STARTER	1	1		
020	16661-6308-0	ASSY YOKE	1	1		
030	11197-6307-0	ASSY ARMATURE	1	1		
040	11460-6350-0	BEARING	1	1		
050	11460-6353-0	BEARING	1	1		
060	17341-6304-0	CLUTCH, OVER RUNNING	1	1		
065	17381-6328-0	PINION, BEVEL	1	1		
070	17341-6303-0	FRAME, DRIVE END	1	1		
080	17298-6302-0	ASSY SWITCH, MAGNETIC	1	1		
090	17341-6320-0	FRAME, END	1	1		
100	11197-6338-0	ASSY HOLDER, BRUSH	1	1		
110	15401-6339-0	SPRING, BRUSH	4	4		
120	11460-6327-0	GEAR	1	1		
130	11460-6311-0	RETAINER	1	1		
140	19212-6310-0	ROLLER	5	5		
150	19212-9713-0	BALL	1	1		
160	11460-6312-0	SPRING	1	1		
170	11460-9331-0	BOLT	2	2		
180	15511-9666-0	O RING	2	2		
190	15511-6376-0	ASSY BOLT	2	2		
200	16285-6357-0	PIPE, DRAIN	1	1		
210	16611-9201-0	NUT	1	1		
220	16611-6345-0	COVER	1	1		
230	11197-6332-0	BOLT	2	2		
240	16285-9201-0	NUT, HEXAGON	1	1		
250	16611-6366-0	CORD, STOP SOLENOID	1	1		
260	16612-6310-0	BAND, COVER	1	1		
270	16285-9805-0	ASSY COVER	1	1		#

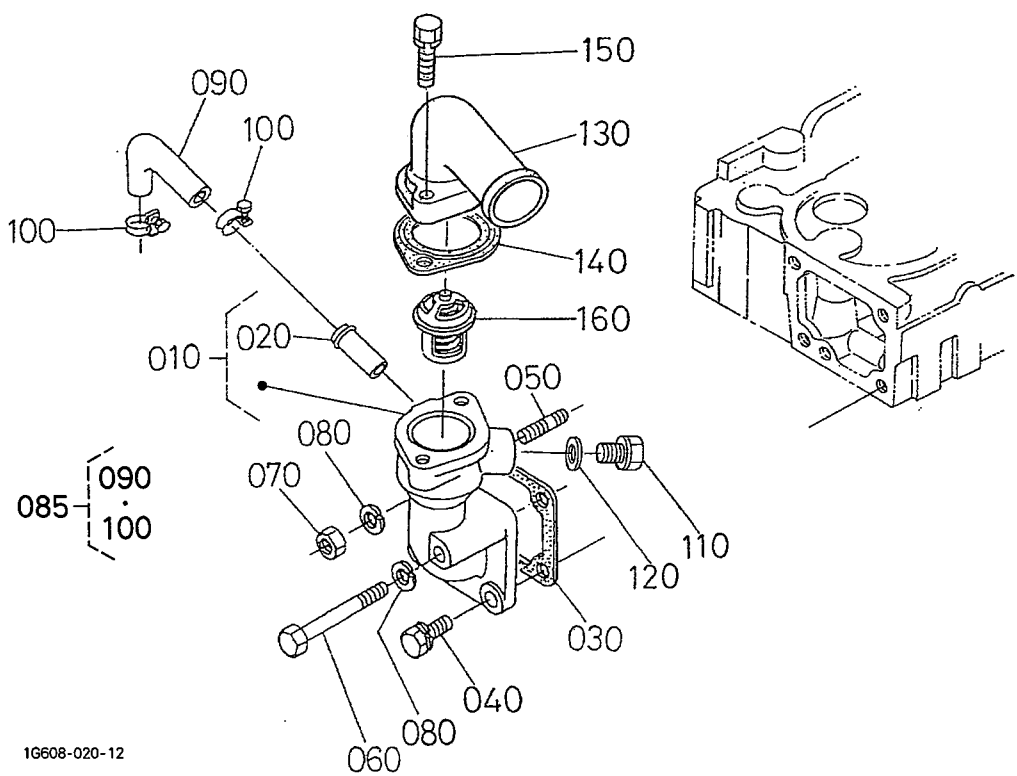


19077-043-10

A:V1903-EBG-EPS-1 B:V1903-BG-EPS-1

REF.No.	PART No.	PART NAME	Q' TY/S. No.		I. C.	REMARKS
			A	B		
010	06311-55010	PLUG	1	1		
020	04717-01000	WASHER, WITH RUBBER	1	1		
030	06312-10010	PLUG	1	1		

# 0500 WATER FLANGE AND THERMOSTAT

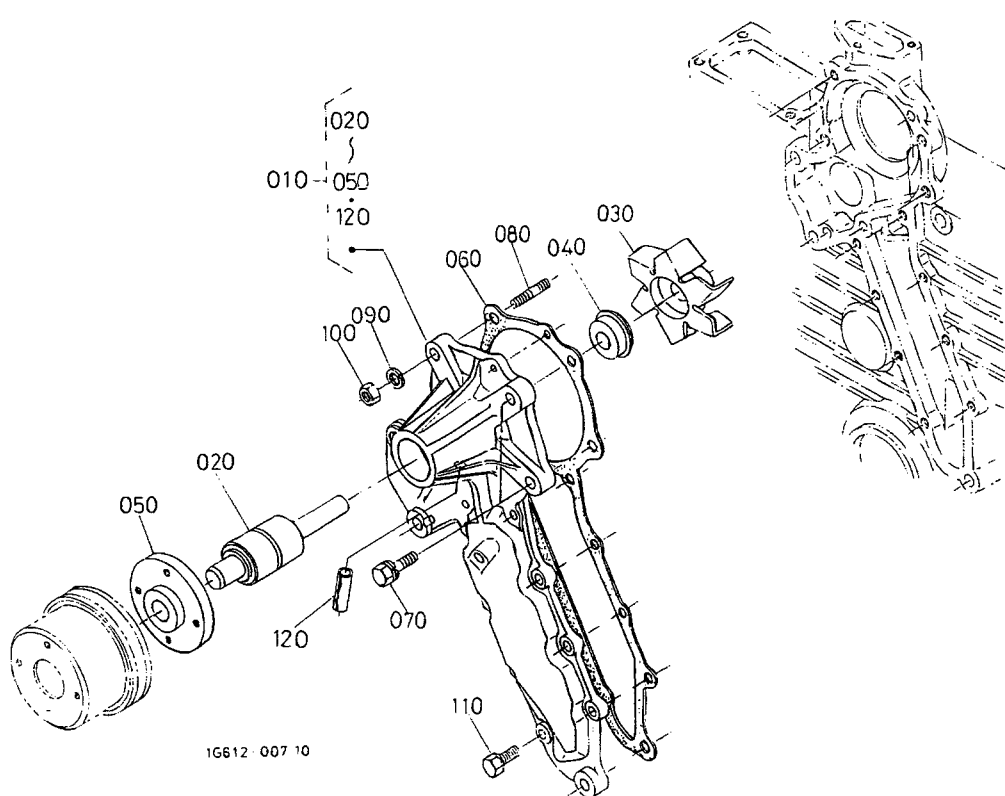


A:V1903-EBG-EPS-1 B:V1903-BG-EPS-1

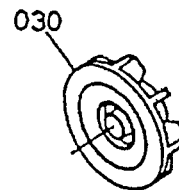
REF. No.	PART No.	PART NAME	Q' TY/S. No.		I. C.	REMARKS
			A	B		
010	19202-7270-2	COMP. FLANGE, WATER	1	1		
020	17331-7334-2	PIPE, WATER RETURN	1	1		
030	1A021-7292-0	GASKET, WATER FLANGE	1	1		
040	01123-50820	BOLT	2	2		
050	15221-9153-0	STUD	1	1		
060	01153-50870	BOLT	1	1		
070	02156-50080	NUT	1	1		
080	04512-60080	WASHER, SPRING	2	2		
085	1G369-7330-0	ASSY PIPE	>=3W0001	-		#
090	15521-7334-0	PIPE, WATER RETURN	<=3U0102	1		
090	1G369-7334-0	PIPE, WATER RETURN	>=3W0001	-		↔
100	15109-7336-0	BAND, PIPE	2	2		
110	15512-9601-0	PLUG	1	1		
120	04717-02150	WASHER, WITH RUBBER	1	1		
130	16691-7326-0	COVER, THERMOSTAT	1	1		
140	1A021-7327-0	GASKET, THERMO. COVER	<=2E0405	<=31527		
140	16221-7327-0	GASKET, THERMOSTAT	>=2G0001	>=31528		←
150	01123-50835	BOLT	2	2		
160	19434-7301-0	ASSY THERMOSTAT	<=1A0482	<=31413		
160	19434-7301-4	ASSY THERMOSTAT	>=1C0001	>=31414		←

↔ Interchangeable; ≠ not interchangeable; ← new for old; → old for new

# 0501 WATER PUMP



030 16661-7351-0



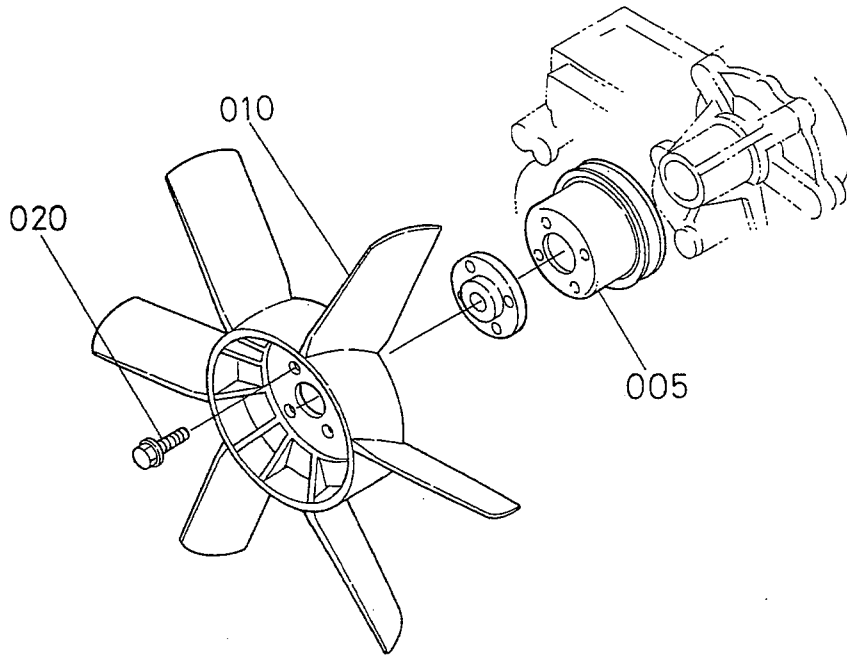
1G612-007-10

1G607-820-10

A:V1903-EBG-EPS-1 B:V1903-BG-EPS-1

REF. No.	PART No.	PART NAME	Q' TY/S. No.		I. C.	REMARKS
			A	B		
010	15521-7303-3	ASSY PUMP, WATER	<=1W0523	<=31527		
010	15521-7303-5	ASSY PUMP, WATER	>=1Y0001	>=31528	←	
020	15521-7355-0	BEARING	1	1		
030	16661-7351-0	IMPELLER, WATER PUMP	<=1W0523	<=31527		
030	1A021-7351-0	IMPELLER, WATER PUMP	>=1Y0001	>=31528	←	
040	16661-7305-0	ASSY SEAL, MECHANICAL	1	1		
050	15521-7352-0	FLANGE, WATER PUMP	<=3E0456	<=3E0456		#
050	1A021-7352-0	FLANGE, WATER PUMP	>=3G0001	>=3G0001	↔	#
060	15766-7343-0	GASKET, WATER PUMP	1	1		
070	01123-50828	BOLT	2	2		
080	15521-9151-0	STUD	<=3U0102	<=3U0102		#
080	01518-50822	STUD	>=3W0001	>=3W0001	↔	#
090	04512-60080	WASHER, SPRING	2	2		
100	02156-50080	NUT	2	2		
110	01023-50618	BOLT	8	8		
120	1E017-3365-0	PIN, SPRING	>=2S0001	>=2S0001		#

↔ Interchangeable; ≠ not interchangeable; ← new for old; → old for new

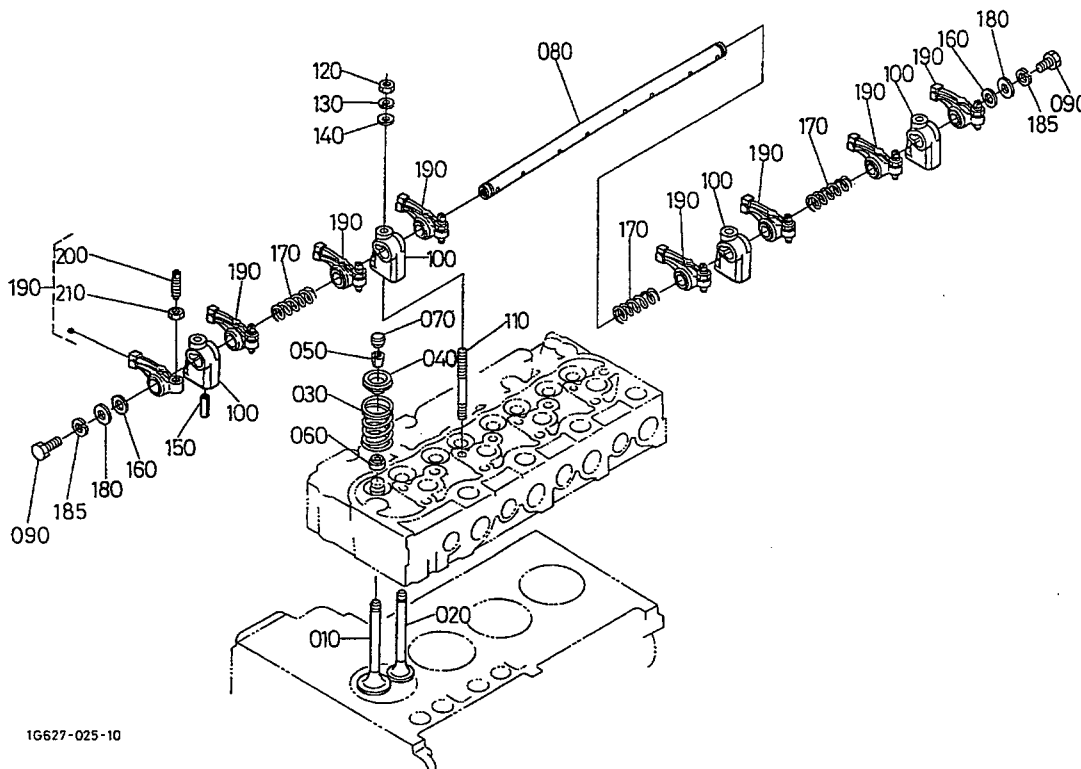


1G627-018-10

A:V1903-EBG-EPS-1 B:V1903-BG-EPS-1

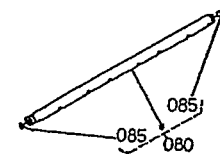
REF.No.	PART No.	PART NAME	Q' TY/S. No.		I. C.	REMARKS
			A	B		
005	15471-7425-0	PULLEY, FAN	1	1		
010	17371-7411-0	FAN	1	1		
020	01754-50612	BOLT, FLANGE	4	4		

# 0600 VALVE AND ROCKER ARM

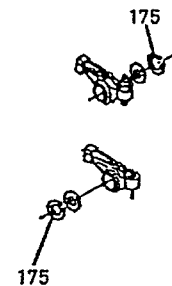


1G627-025-10

080 15401-1405-2  
085 03410-00808



175 04612-00140



1G607-821-10

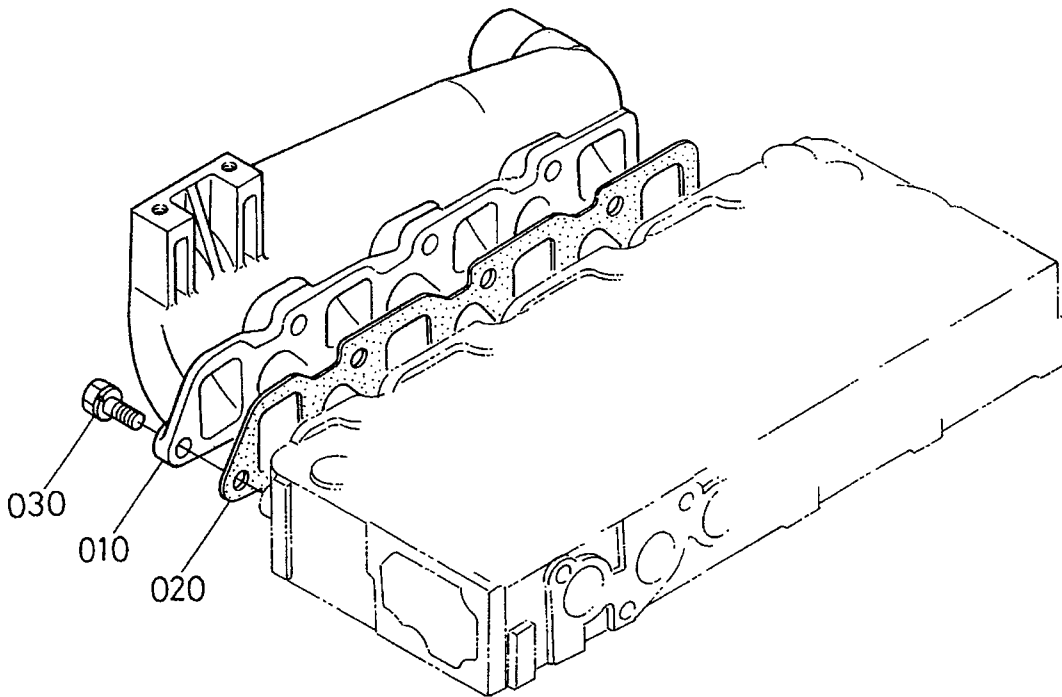
A:V1903-EBG-EPS-1 B:V1903-BG-EPS-1

REF. No.	PART No.	PART NAME	Q' TY/S. No.		I. C.	REMARKS
			A	B		
010	16484-1311-0	VALVE, INLET	4	4		
020	16484-1312-0	VALVE, EXHAUST	4	4		
030	15221-1324-0	SPRING, VALVE	8	8		
040	15221-1333-0	RETAINER, VALVE SP.	8	8		
050	15221-1398-0	COLLET, VALVE SPRING	8	8		SET
060	15221-1315-0	SEAL, VALVE STEM	8	8		
060	15221-1315-3	SEAL, VALVE STEM	<=3S0175 8	<=3S0175 8	←	
070	15221-1328-0	CAP, VALVE	>=3U0001 8	>=3U0001 8		
080	15401-1405-2	ASSY SHAFT, R-ARM	1 <=1Y0374	1 <=31527		# NOT SALE
080	1A091-1426-0	SHAFT, ROCKER ARM	>=2A0001	>=31528	≠	
085	03410-50808	SCREW, SET	2 <=1Y0374	2 <=31527		
090	01153-50812	BOLT	2 >=2A0001	2 >=31528		
100	15221-1435-0	BRACKET, ROCKER ARM	4 <=5A0121	4 <=5A0121	#	
100	15221-1435-3	BRACKET, ROCKER ARM	4 >=5C0001	4 >=5C0001	← #	
110	15521-9150-0	STUD	4	4		
120	02156-50080	NUT	4	4		
130	04512-60080	WASHER, SPRING	4	4		
140	04012-50080	WASHER, PLAIN	4	4		
150	05411-00528	PIN, SPRING	1	1		
160	15221-1443-0	WASHER, R-ARM. SHAFT	2	2		
170	15221-1431-0	SPRING, ROCKER ARM	3	3		
175	04612-00140	CIR CLIP, EXTERNAL	2 <=1Y0374	2 <=31527		
180	04013-60080	WASHER, PLAIN	2 >=2A0001	2 >=31528		
185	04512-60080	WASHER, SPRING	2 >=2A0001	2 >=31528		
190	15621-1403-0	ASSY ROCKER ARM	8	8		
200	15521-1423-0	SCREW, ADJUSTING	8	8		
210	15021-1424-0	NUT	8	8		

↔ Interchangeable; ≠ not interchangeable; ← new for old; → old for new



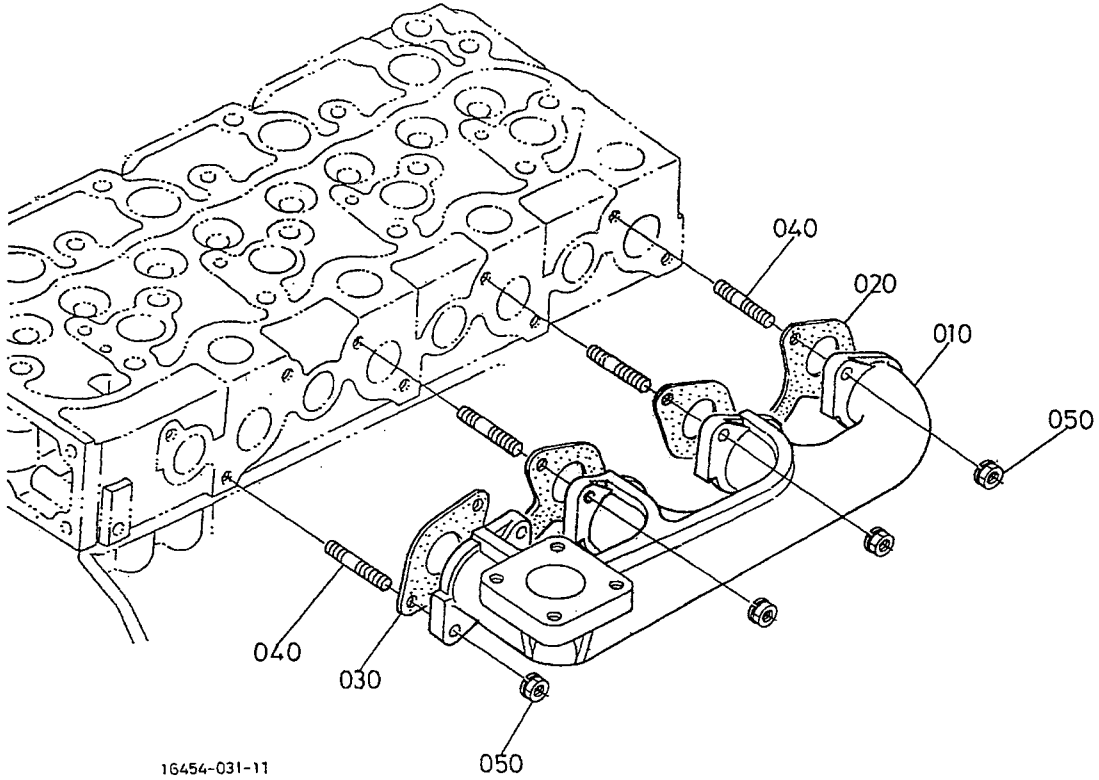
# 0601 INLET MANIFOLD



16454-024-10

A:V1903-EBG-EPS-1 B:V1903-BG-EPS-1

REF. No.	PART No.	PART NAME	Q' TY/S. No.		I. C.	REMARKS
			A	B		
010	16662-1176-0	MANIFOLD, INLET	1	1		
020	16423-1182-0	GASKET, IN-MANIFOLUDO	1	1		#
020	1A091-1182-2	GASKET, IN-MANIFOLD	1	1		#
030	01123-50822	BOLT	7	7	↔	#

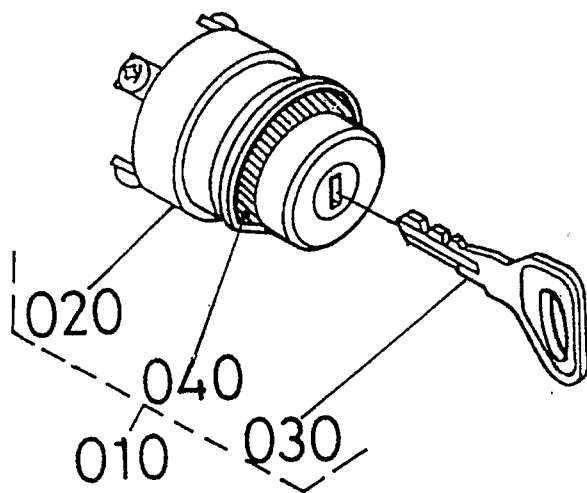


A:V1903-EBG-EPS-1 B:V1903-BG-EPS-1

REF.No.	PART No.	PART NAME	Q' TY/S. No.		I. C.	REMARKS
			A	B		
010	17377-1231-2	MANIFOLD, EXHAUST	1	1		
020	15439-1235-0	GASKET, EX-MANIFOLD	~1G02B3	~31526	↕	#
020	1A091-1236-0	GASKET, EX-MANIFOLD	1J0001~	31527~	↕	#
030	15296-1235-0	GASKET, EX-MANIFOLD	~1G02B3	~31526	↕	#
030	1A091-1235-0	GASKET, EX-MANIFOLD	1J0001~	31527~	↕	#
040	15221-9153-0	STUD	B	B		
050	16429-9201-0	NUT	B	B		

0801 STARTER SWITCH

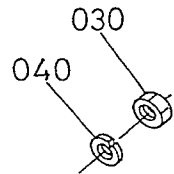
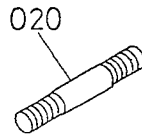
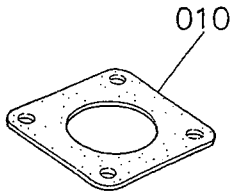
C02-R



12599 - 035 - 10

A:V1903-EBG-EPS-1 B:V1903-BG-EPS-1

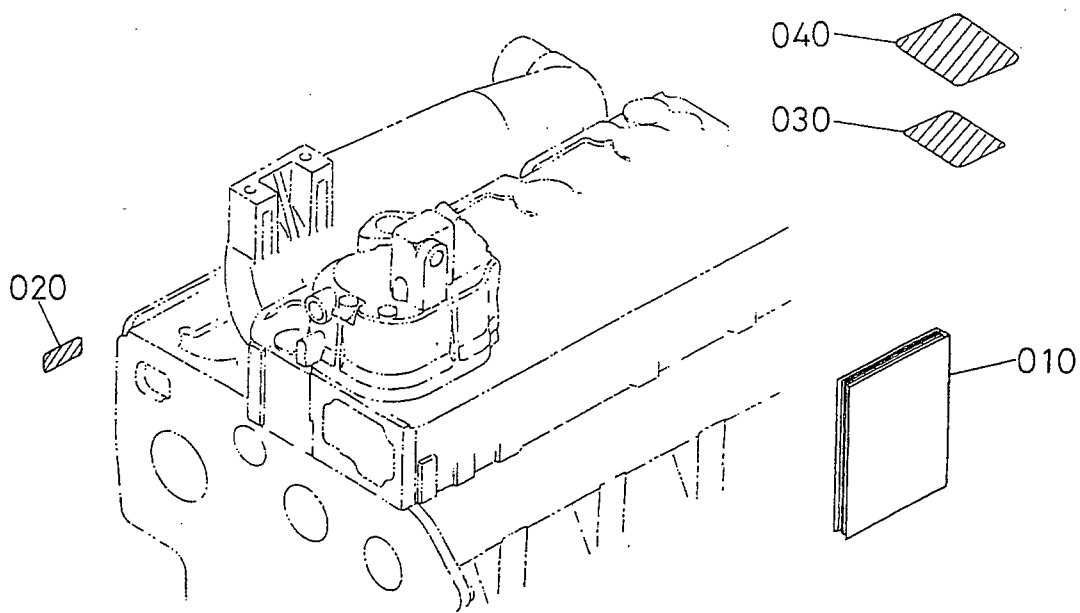
REF.No.	PART No.	PART NAME	Q' TY/S. No.		I. C.	REMARKS
			A	B		
010	66706-5512-0	ASSY SWITCH, STARTER	1	1		
020	66711-5513-0	SWITCH, STARTER	1	1		
030	66711-5524-0	KEY, START	2	2		
040	66706-5515-0	LABEL, STARTER SWITCH	1	1		



1G627-016-10

A:V1903-EBG-EPS-1 B:V1903-BG-EPS-1

REF.No.	PART No.	PART NAME	Q' TY/S. No.		I. C.	REMARKS
			A	B		
010	T0070-1642-0	GASKET, MUFFLER	1	1		
020	15221-8821-0	STUD	-	4		# CORRECTION
030	02056-50060	NUT	-	4		# CORRECTION
040	04512-60060	WASHER, SPRING	-	4		# CORRECTION



1G627-017-10

A:V1903-EBG-EPS-1 B:V1903-BG-EPS-1

REF.No.	PART No.	PART NAME	Q' TY/S. No.		I. C.	REMARKS
			A	B		
010	17298-8916-6	MANUAL, INSTRUCTION	1	1		
020	17076-8867-0	LABEL	1	1		
030	19426-8790-3	LABEL	1	1		
040	19426-8788-0	LABEL, INSTRUCTION	1	1		





PIES. No.		EDK0000388	
BLOCK No.	LINE No.	A(1)	B(2)
01	01	1G627-21000 V1903-EBG-EPS-1	19061-23000 V1903-BG-EPS-1

110·KS·NA×KSI·0·KSI



# KUBOTA

## THE BASIC NECESSITIES GIANT

"Technology for the Needs of Tomorrow" is the ambition of everyone at KUBOTA. Through research and the development of new products for agriculture, industry, construction, and many other areas of modern life, we at KUBOTA hope to realize this goal.