

COMPACT BAND SAW

SPARE PARTS AND INSTRUCTIONS BOOKLET

Original document in Italian

2012



I	F	D	GB	NL
---	---	---	-----------	----

th EDITION



Instructions booklet carefully before operating the machine and keep it for future reference

18. MAIN TROUBLE AND RELATIVE REMEDIES

DEFECT	CAUSE	REMEDY
The motor will not start	Current is not getting to the motor	Have the electric system checked by qualified personnel
Poor motor efficiency	Wrong motor connection	Have the electric system checked by qualified personnel
The motor quickly overheats	The motor is connected to a different voltage than that of the line	Change the connection following the diagram given on its plate
The blade does not cut straight	Imperfect tooth sharpening and setting	Sharpen and set again (see paragraph 16) taking care this is symmetric, that is the same on the right and on the left
The blade cracks at the bottom of the teeth	Blade thickness inadequate for the diameter of the flywheels	Choose the thickness according to the table on paragraph 16
	Teething not appropriate for the work to be done	See paragraph 16
	Bottom of the teeth too sharp	See paragraph 16
	Wrong setting because the teeth are bent at the base	See paragraph 16
	Sharpening not correct because the bottom of the teeth has been overheated	See paragraph 16
	Flywheel seal in a bad state	Replace the seal (see paragraph 17.1.3)
	Blade not slackened after use	See paragraph 13.6
	Flywheels not aligned	Request the intervention of a qualified engineer
	Too much play in the bearings (especially in the bottom one)	Replace the bearings (see paragraph 17.1.4)
The blade breaks close to the welding	Overheating of the blade during welding	Temper the part concerned or eliminate and redo the welding (see paragraph 16)
	Cooling too fast after welding	
The blade moves forwards and backwards during the movement	Welding not straight	Redo the welding (see paragraph 16)
The blade moves very far back when it receives the cutting force	Insufficient flywheel seal convexity	Notify the Technical Service of the area dealer

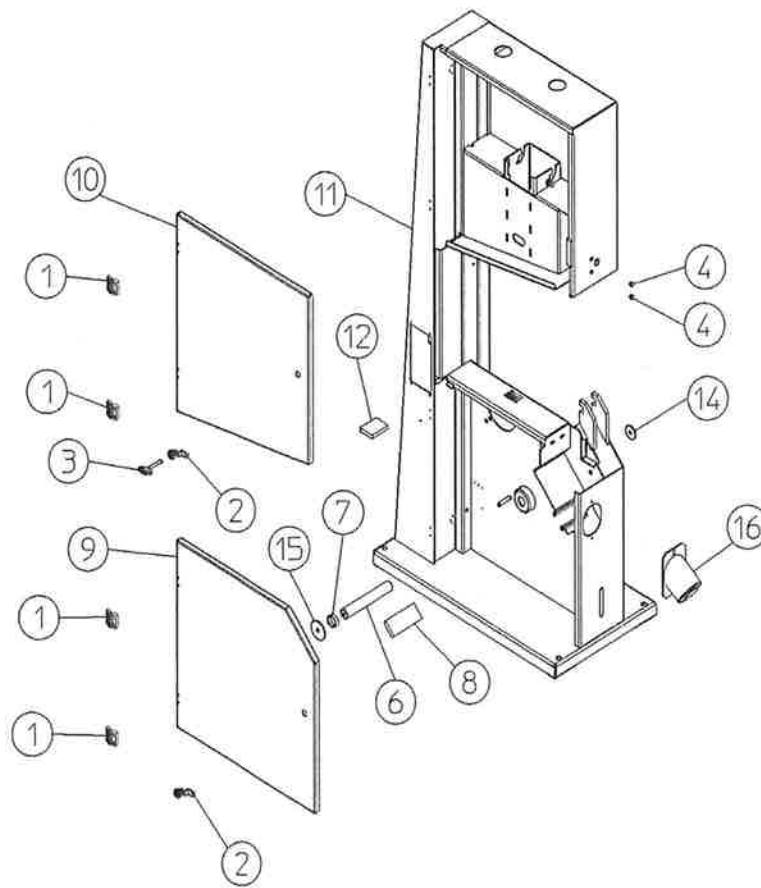
B. SPARE PARTS
Notice

In order to ensure prompt despatch of the necessary spare parts, it is absolutely essential to keep meticulously to the following procedures:

- 1) Indicate the model and part number of the machine.
- 2) Indicate the table, code and reference number of the parts required.
- 3) Indicate the quantity required.

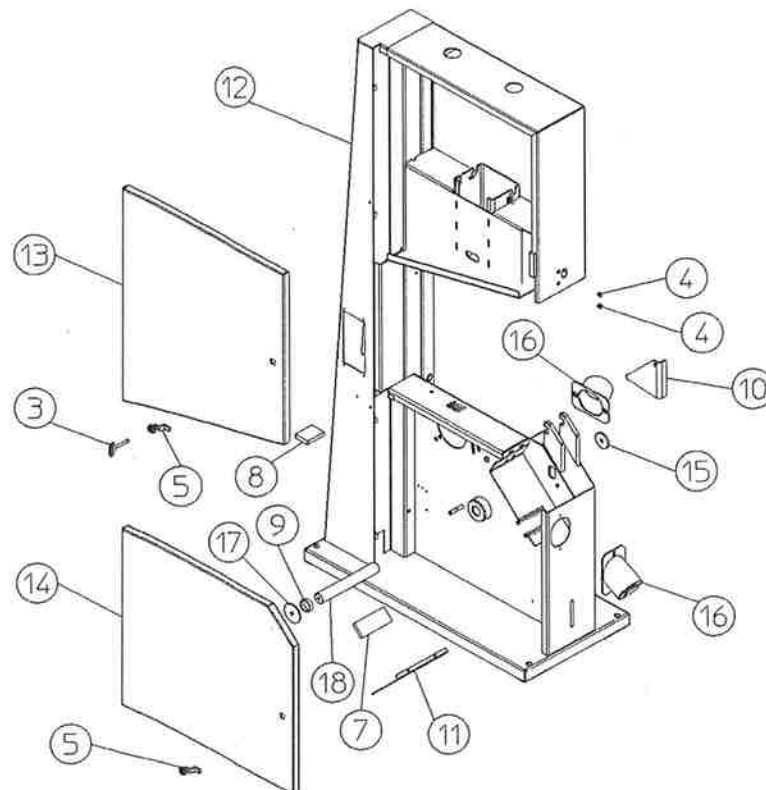
Tav. 1

CO 600



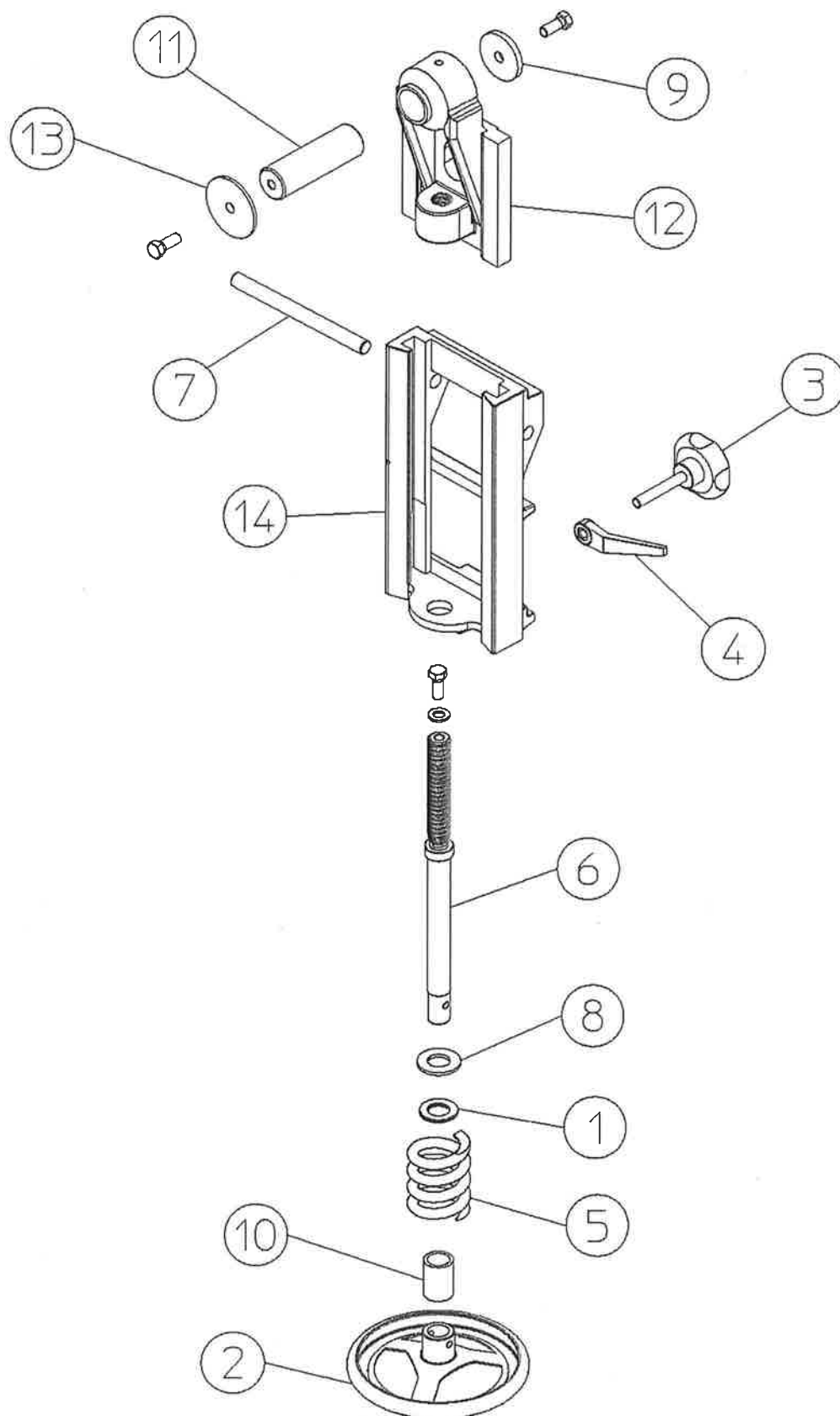
Tav. 1

CO 700-800-900



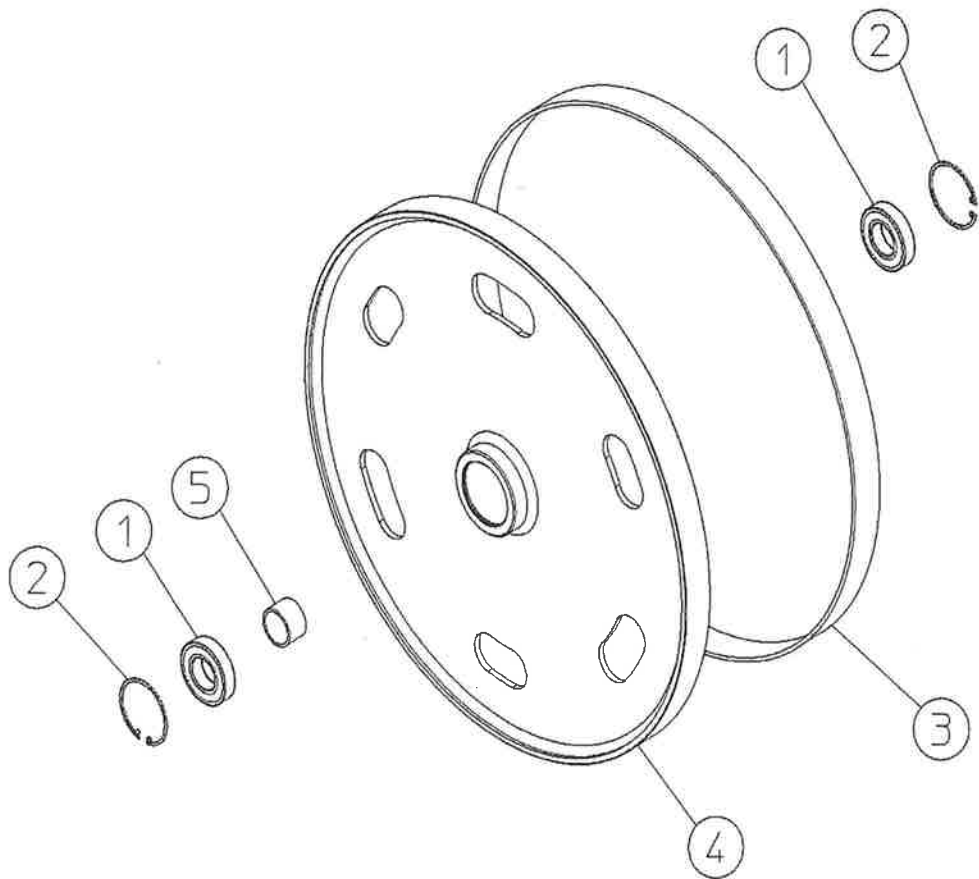
Tav. 2

CO 600-700-800-900



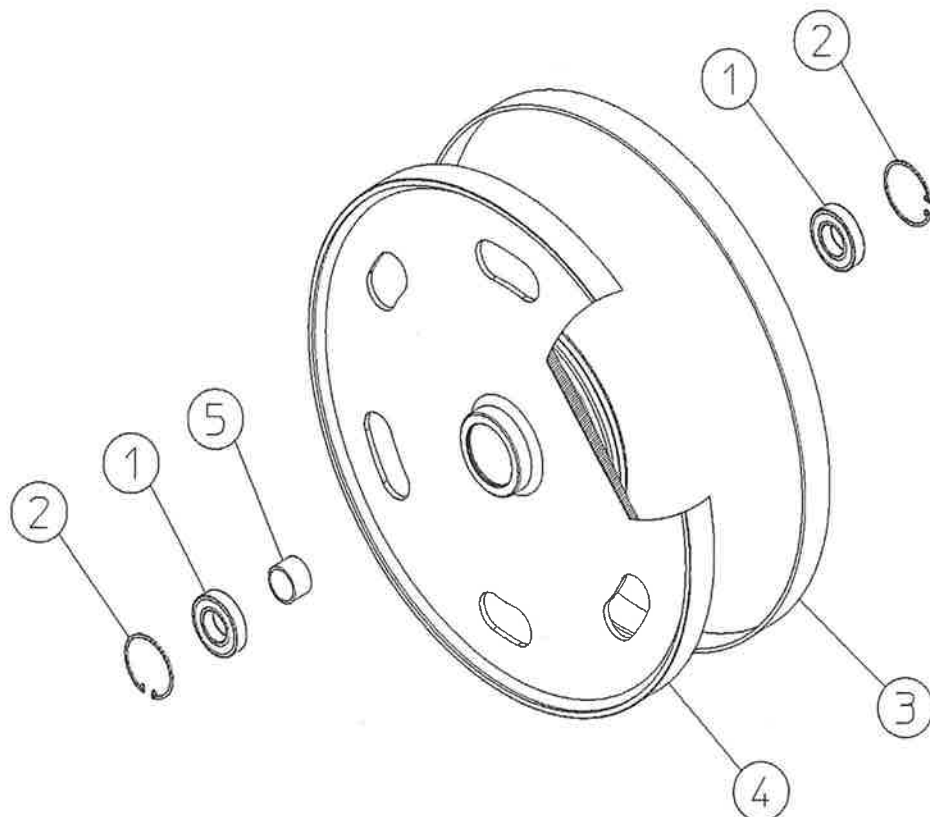
Tav. 3

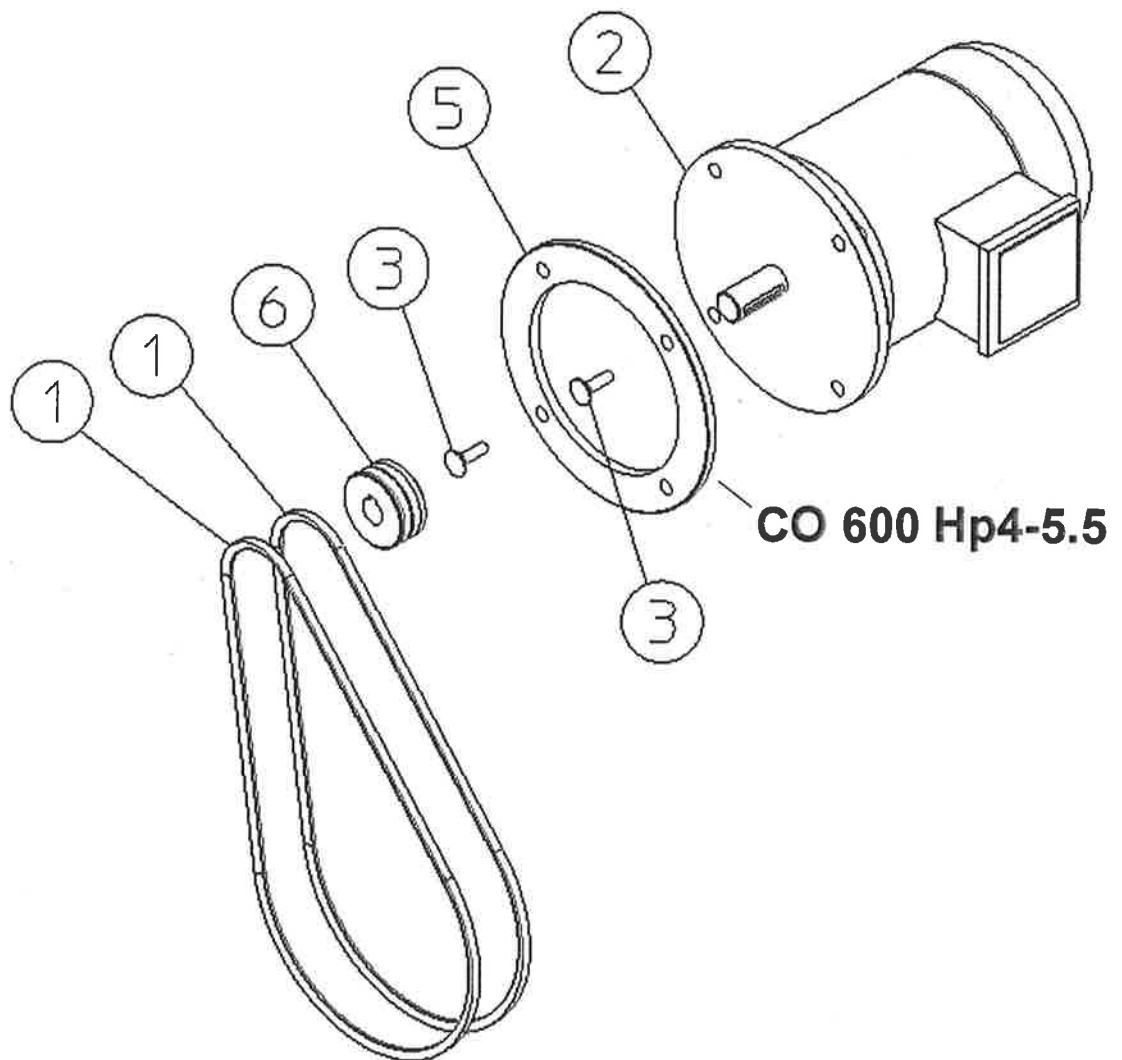
CO 600-700-800-900



Tav. 4

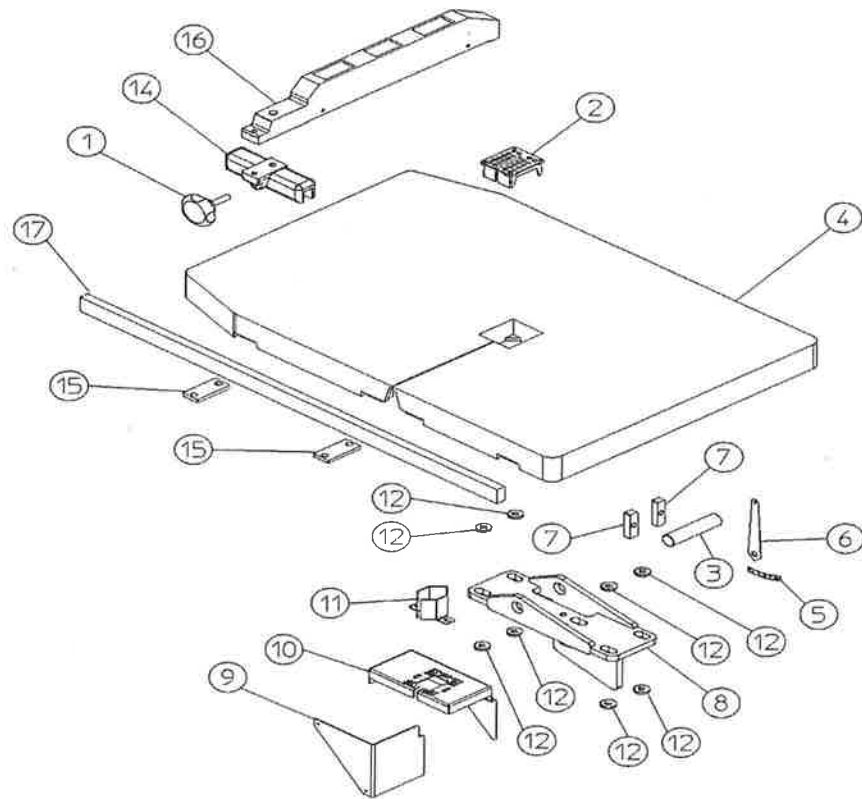
CO 600-700-800-900





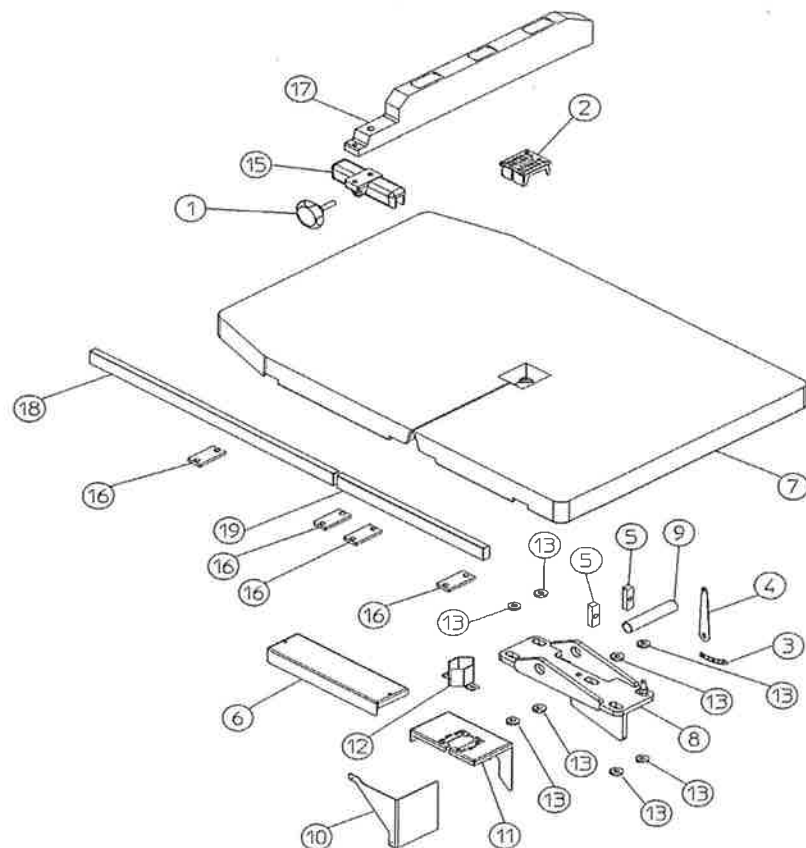
Tav. 6

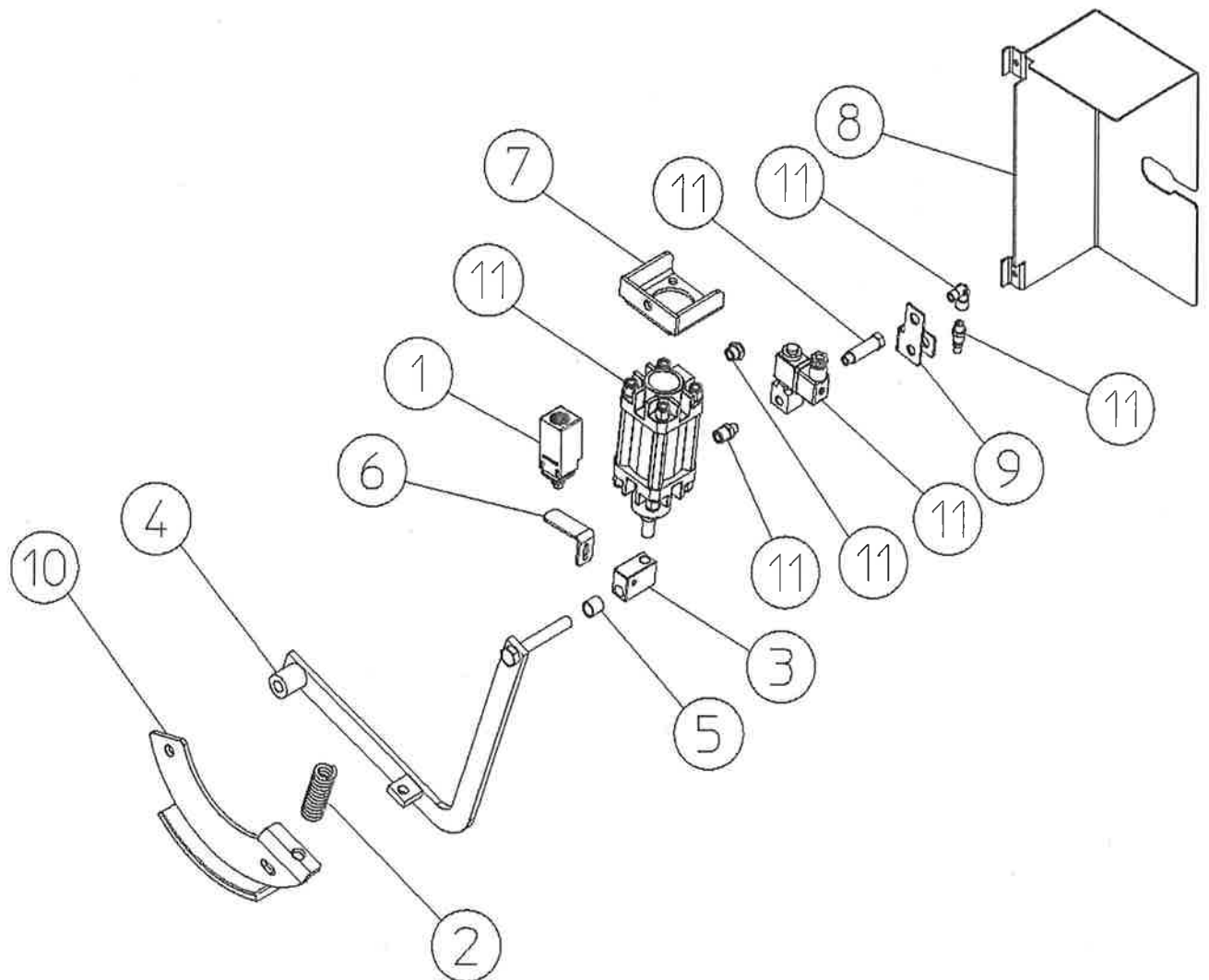
CO 600-700

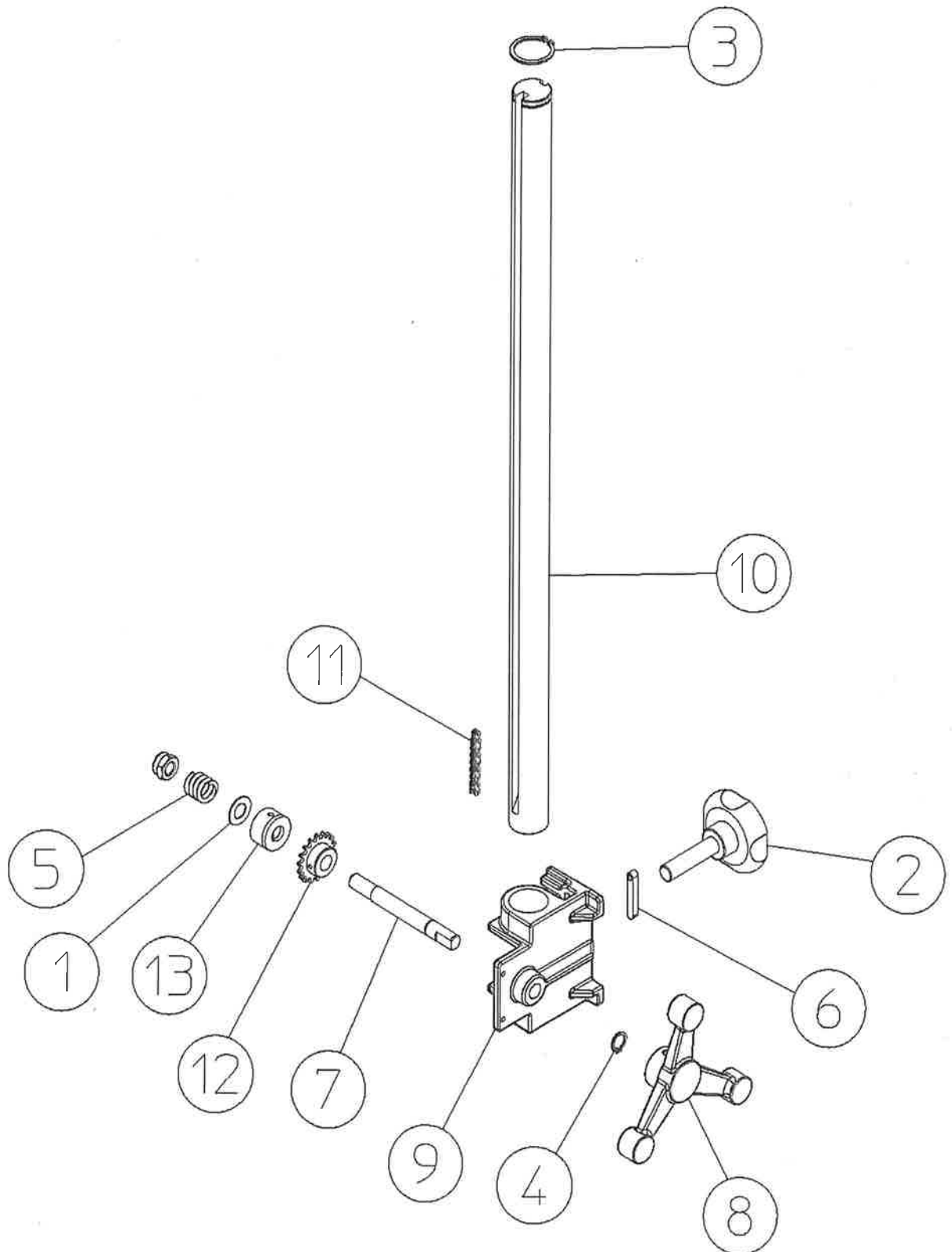


Tav. 7

CO 800-900

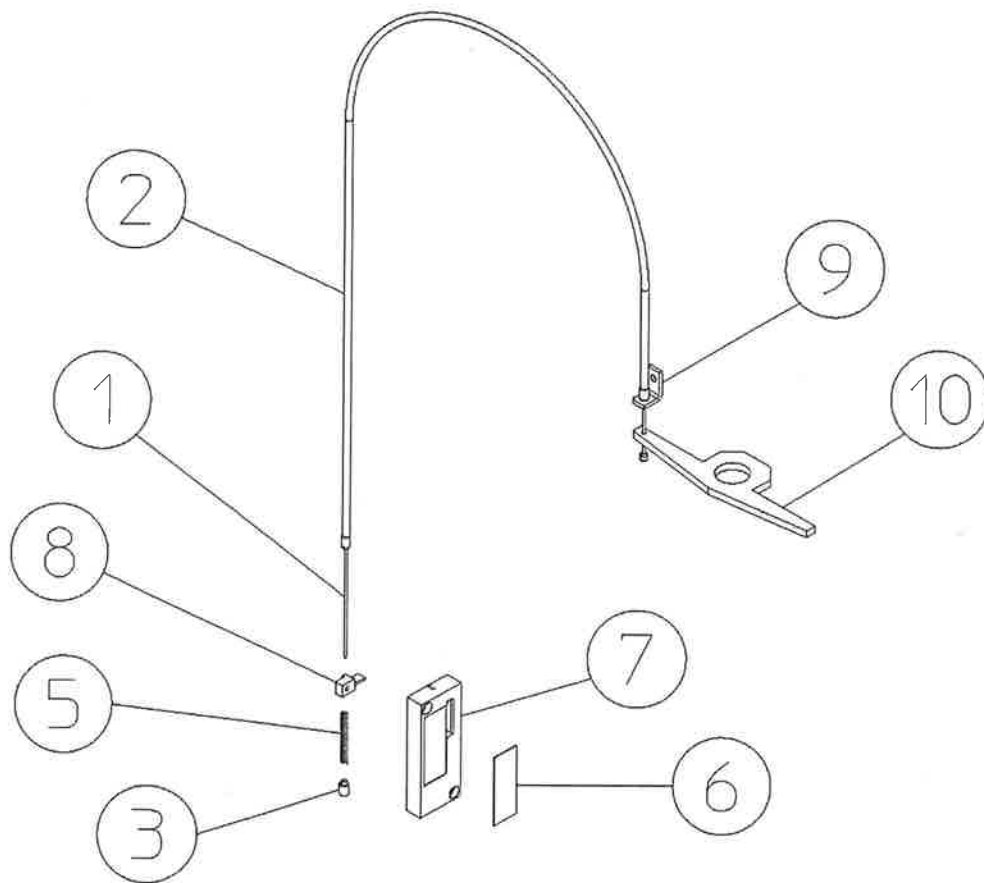






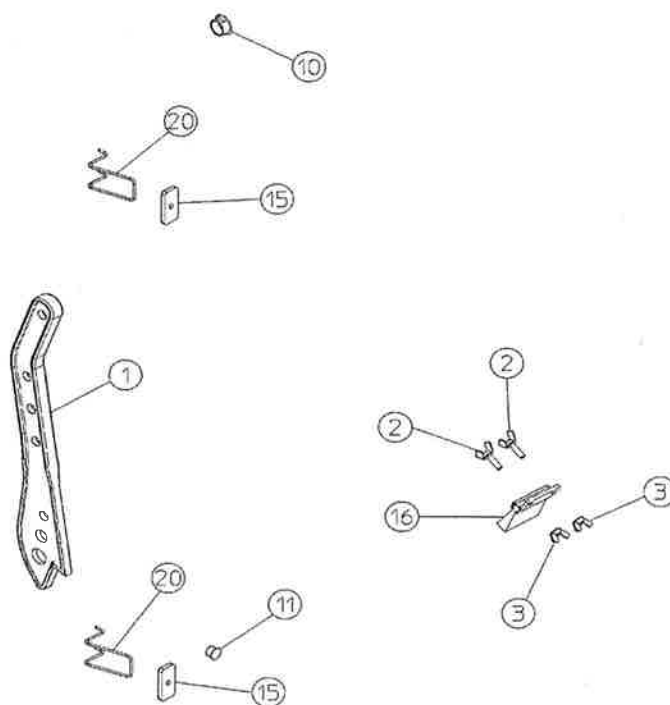
Tav. 10

CO 600-700-800-900



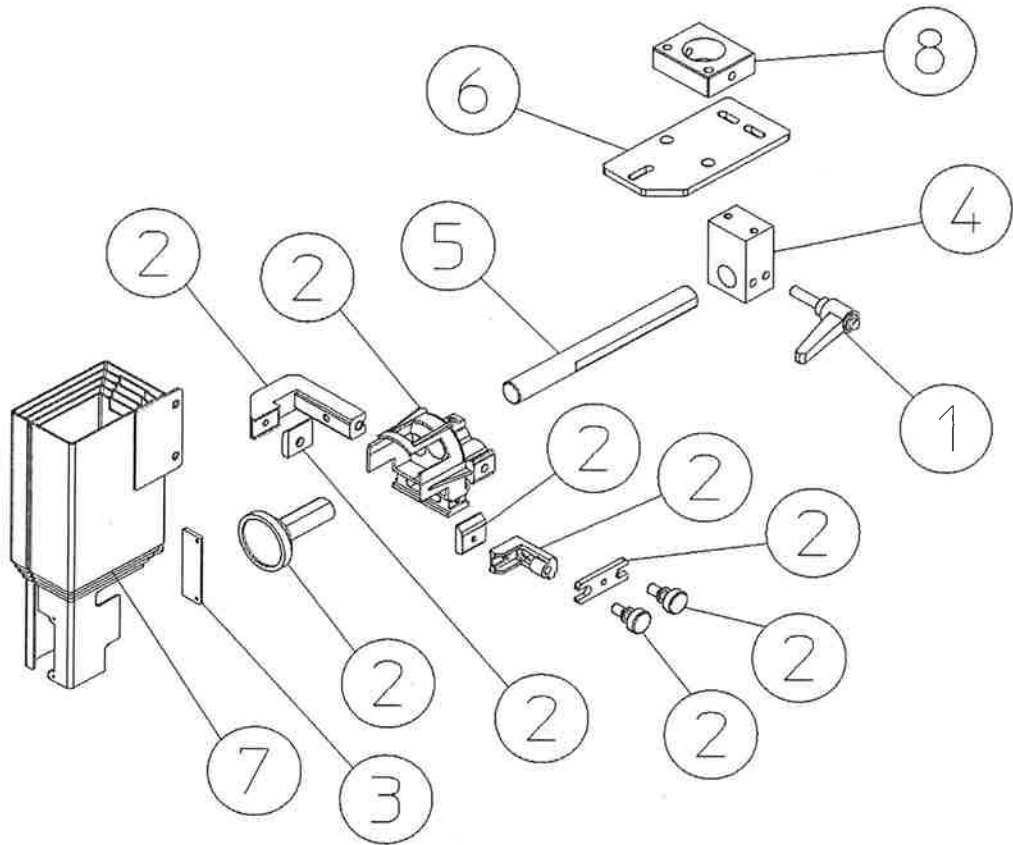
Tav. 11

CO 600-700-800-900



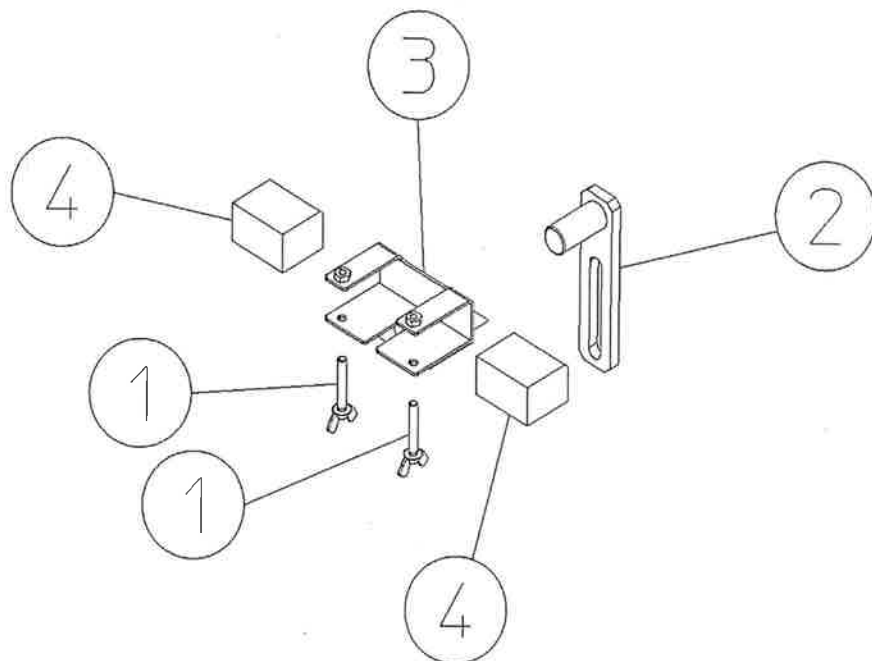
Tav. 12

CO 600-700-800-900



Tav. 13

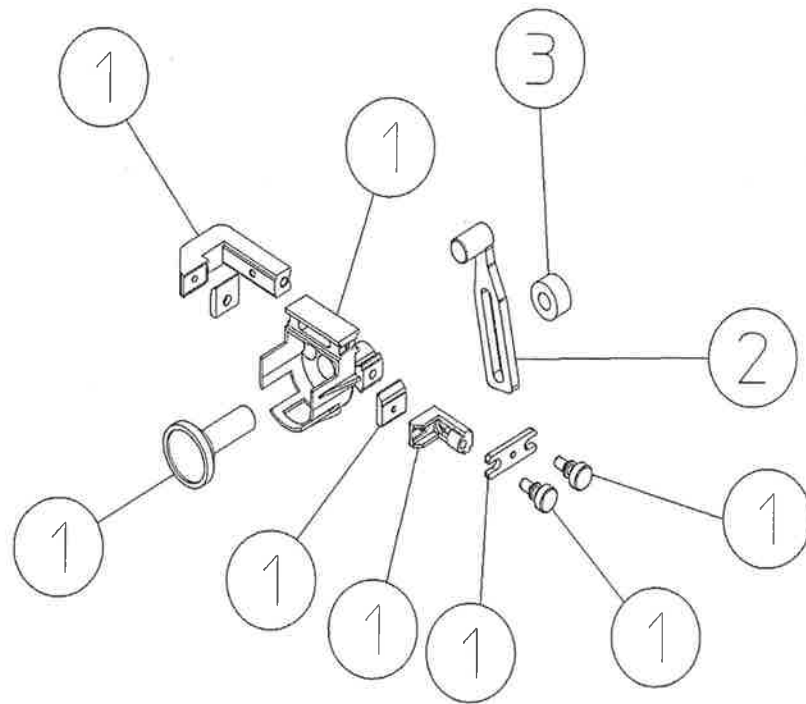
CO 600-700-800-900



Tav. 14

CO 600-700

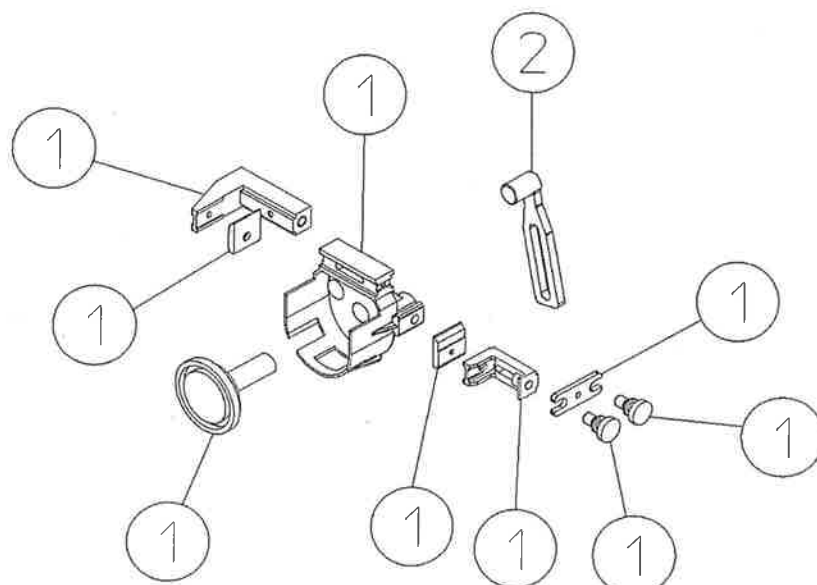
OPTIONAL



Tav. 15

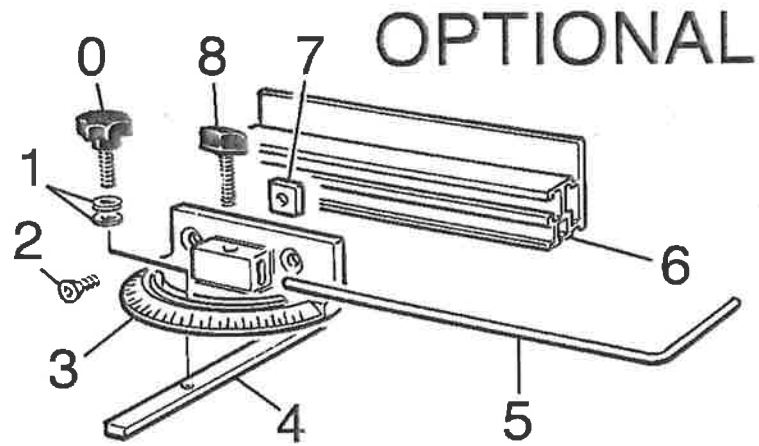
CO 800-900

OPTIONAL



Tav. 16

CO 600



Tav. 17

CO 600-700-800-900

